



StreetSolstice 2014

an observation by Paul Malone

About the StreetSurfaces Project

StreetSurfaces was originated in 2009 and includes the area of South Central London within the environs of the Tate Modern Gallery. This area encompasses my milk round.

It was during the course of this activity that these photographs were taken. Included are photographic observations of the text, symbols and graphics painted on the roads and pavements of the city streets. This lexicon is commonly ascribed to the utilities companies and their activities in the course of the digging up of the roads.

However, this series of commentaries and observations attempts to cast doubt on this assertion. The uninitiated, it must be said, pass by these phenomena with little interest. But these marks represent a whole sub-strata of information and documentation which communicate the hidden world beneath.

Of course there are the physical structures of which we are all familiar - the drains and sewers, tube lines and utility conduits. But this is not the whole story... It would be remiss if due weight were not given to the conceptual transmutations that these present narratives imply and the identity of those responsible.

If you have ever wondered how things just ‘happen’ within the built environment that you inhabit; then the regard of these images may give just cause for you to question such assumptions.



StreetSolstice 2014

We are, once again, at that season where the population of the inner city evaporates to (who knows where) and the streets are left to their own devices. Or so you would think. At a time when the economy is in austerity, there should be a general pulling back when it comes to the profligate consumption of energy.

That is, if it is the case that these plasmas are supplied through mundane utility and the below ground infrastructure. As we have seen in the many earlier manifestations of this series, we should not rule out the possibility of induction as the electro-magnetic origin of luminal concatenation.

In this catalogue I have offered examples, largely without the banality of commentary, of what can be observed. The evidence is all too obvious for those who have been following my researches in this field.

In traversing these streets, we are by no means alone. And if those who remain choose to disport themselves in their very own Festival of Light, then who are we to criticise? The enjoyment is all ours. But do take make sure to scrutinise those electricity bills when they arrive on your doorstep...

Paul Malone 2015



Split level tree : Park Street



Hidden tree : Great Guildford Street

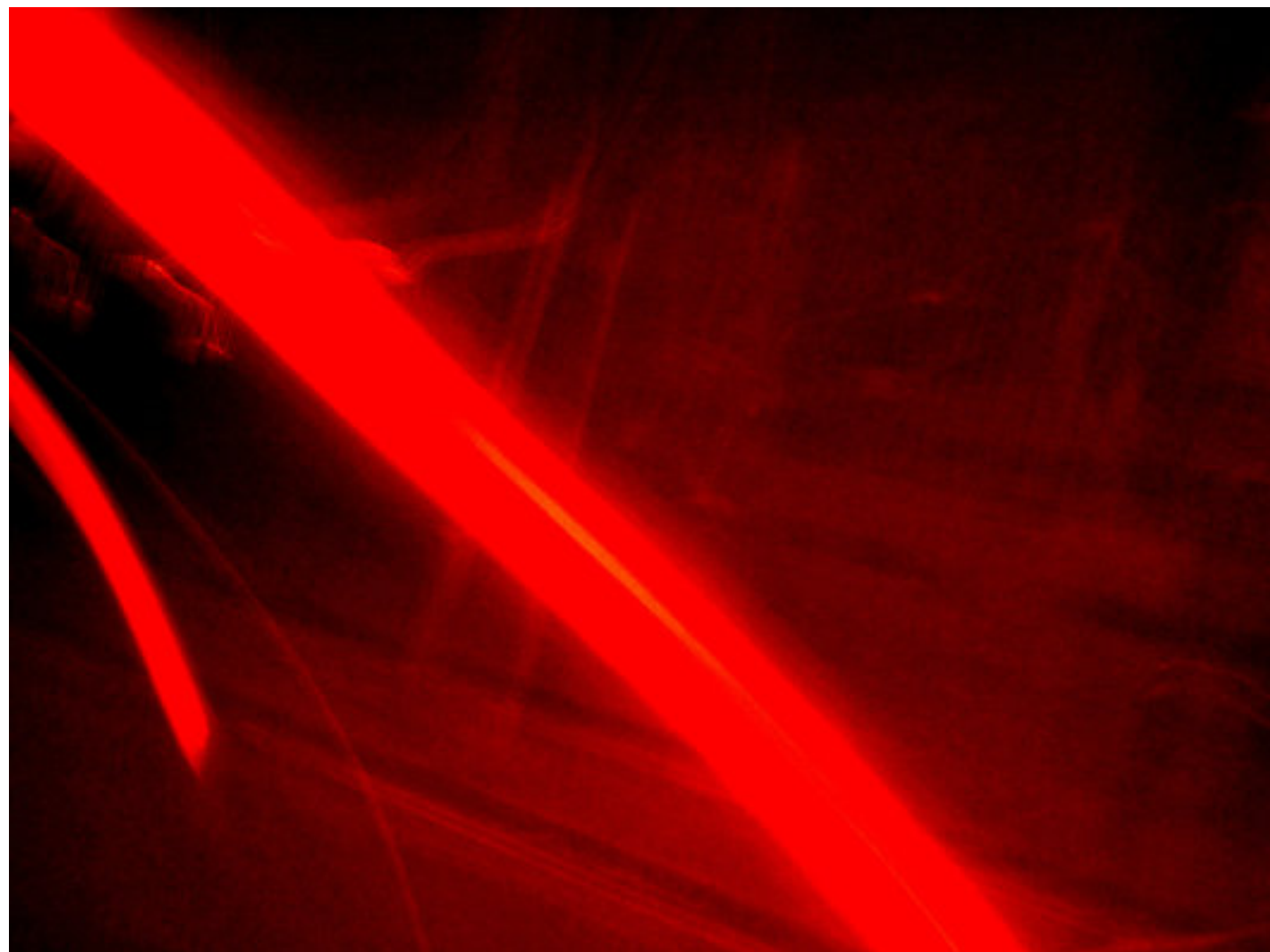


Pimlico Plumbers through water : Sail Street

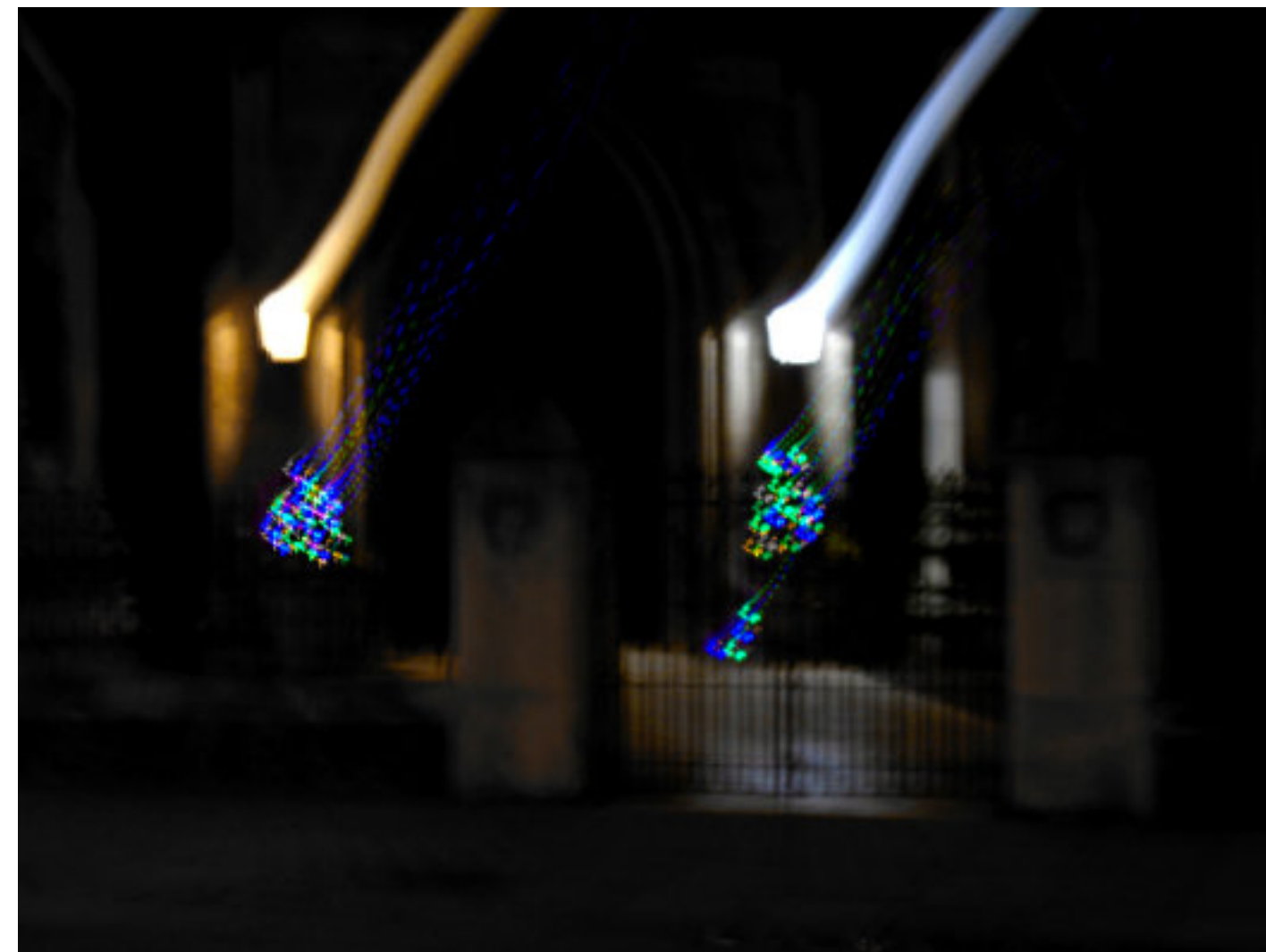
2nd Prize



Foyer tree : Lambeth Road



Red Flare : Southwark Street



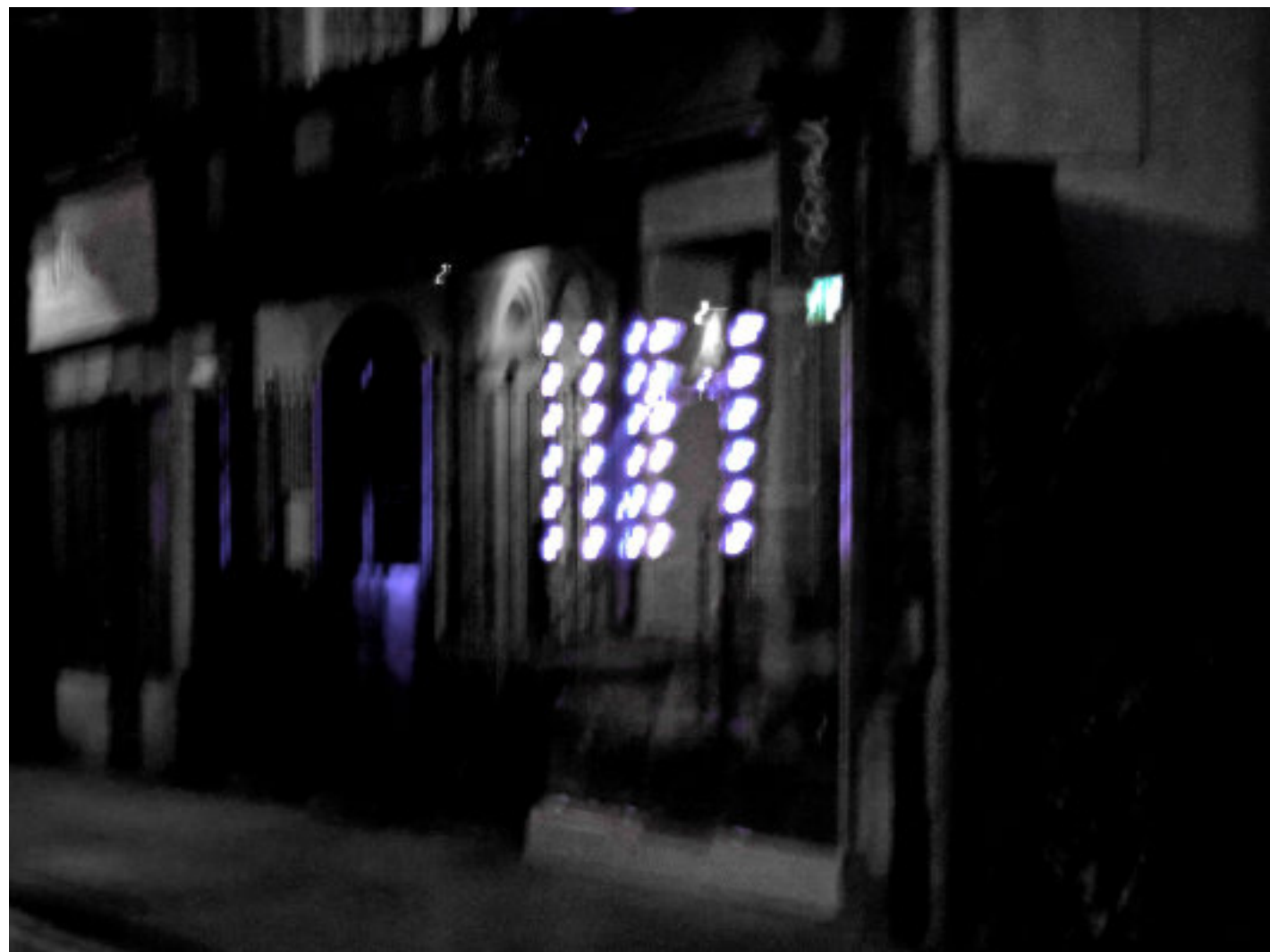
Two flares with two trees : Lambeth Road



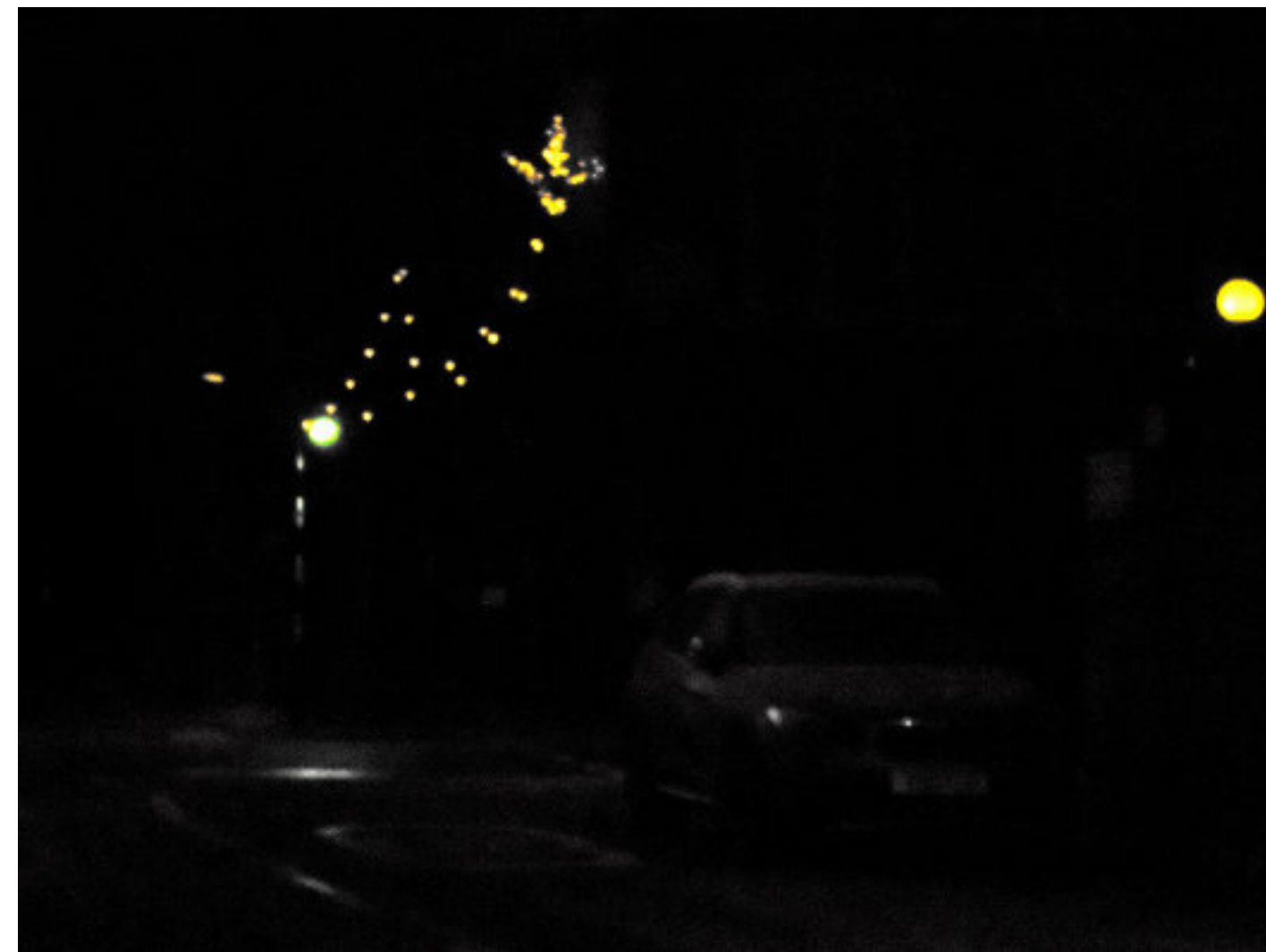
Artistic text : Blackfriars Road



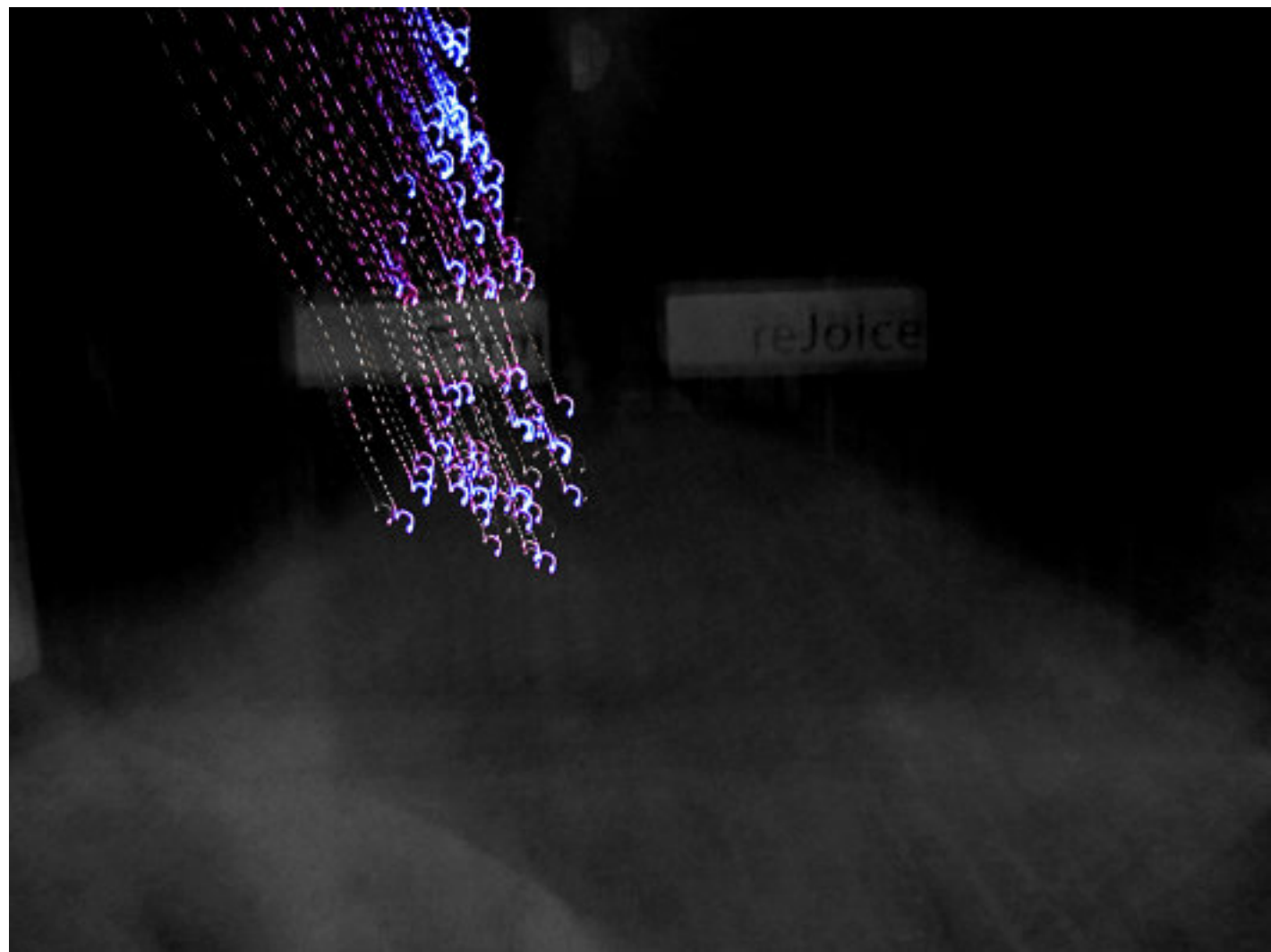
Hanging clusters : Cathedral Street



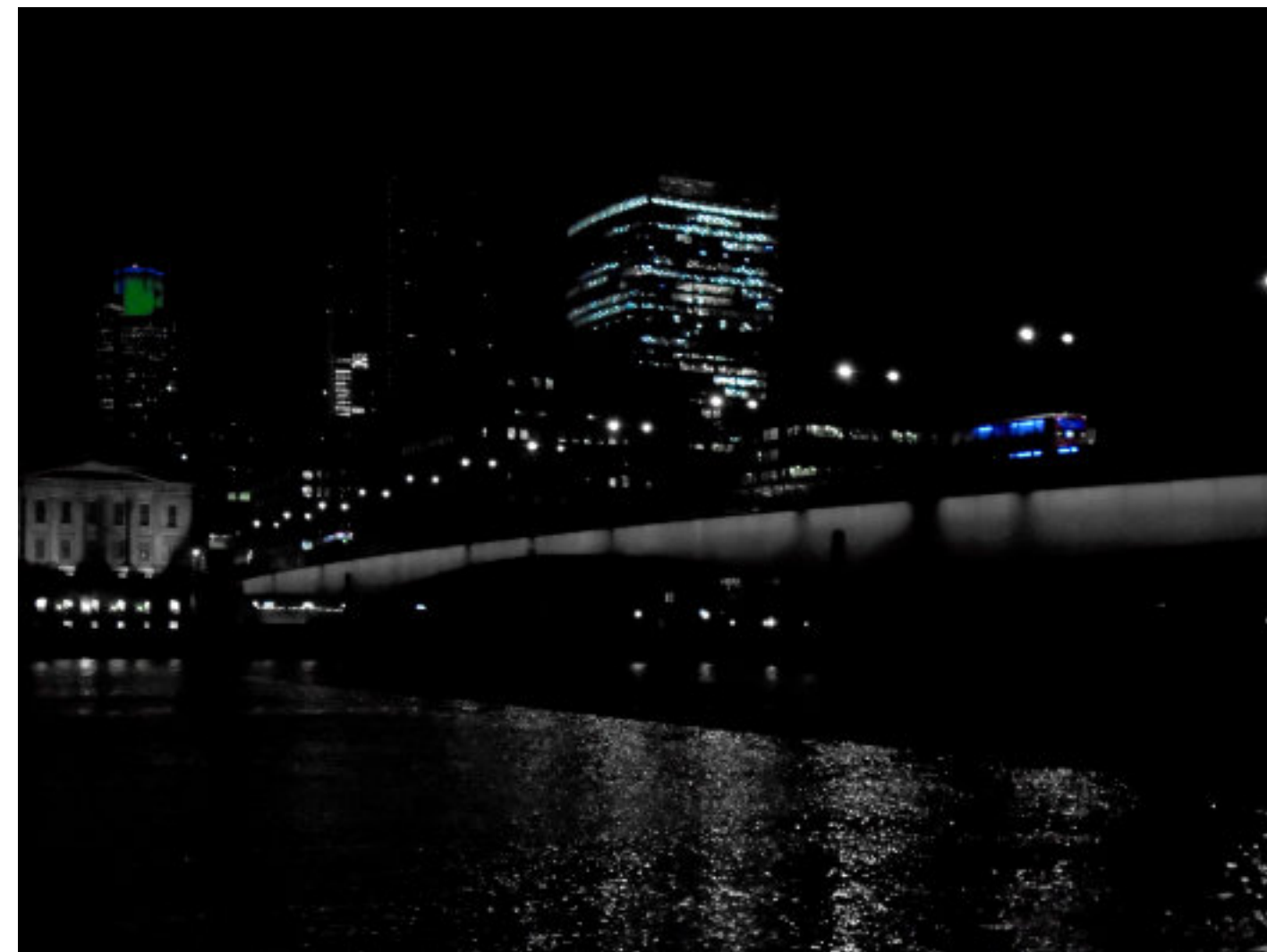
Smartie reflections : Redcross Way



Light string + BMW : Marshalsea Road



ReJoice with flares : Union Street

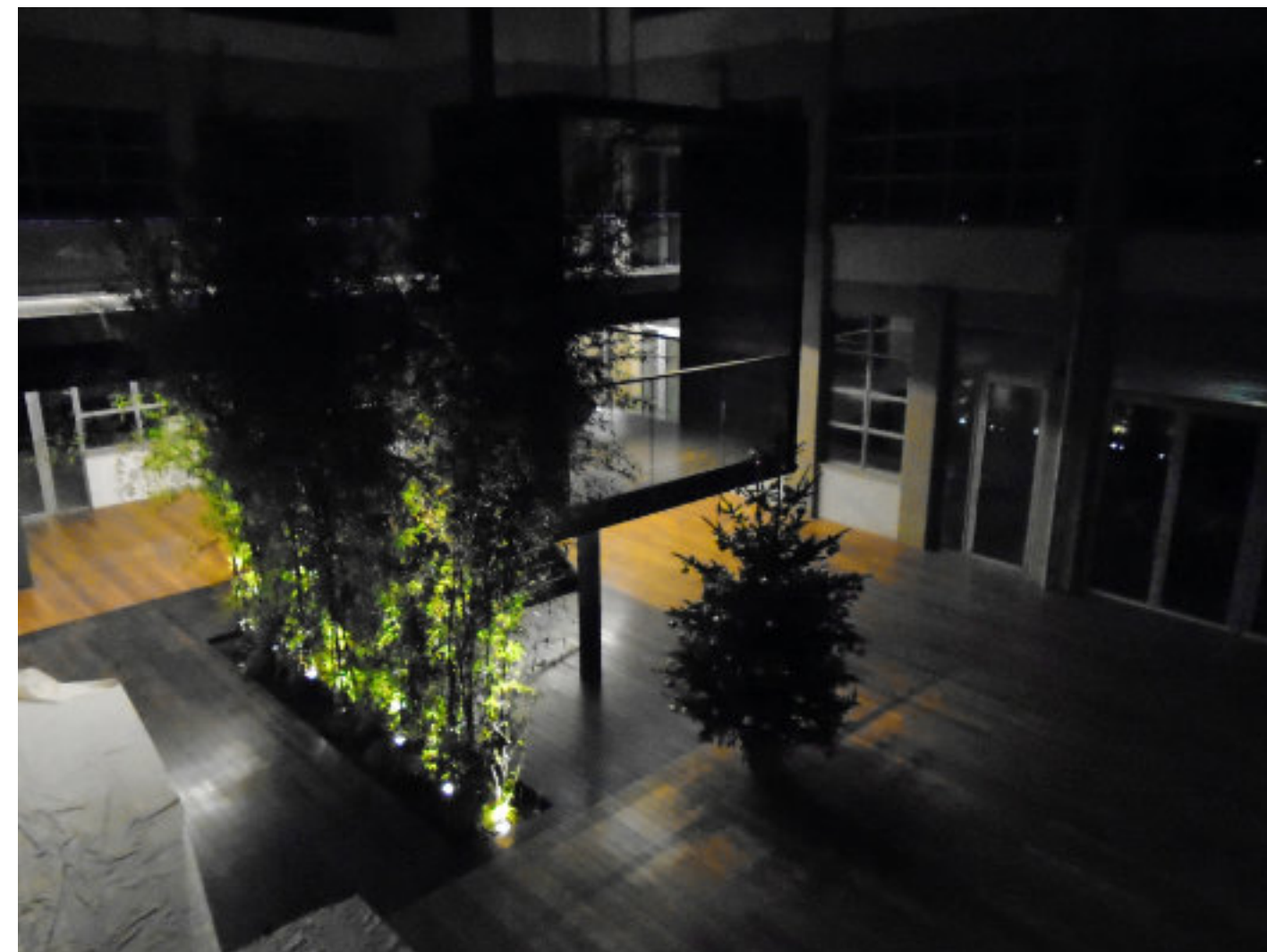


City constellation : London Bridge

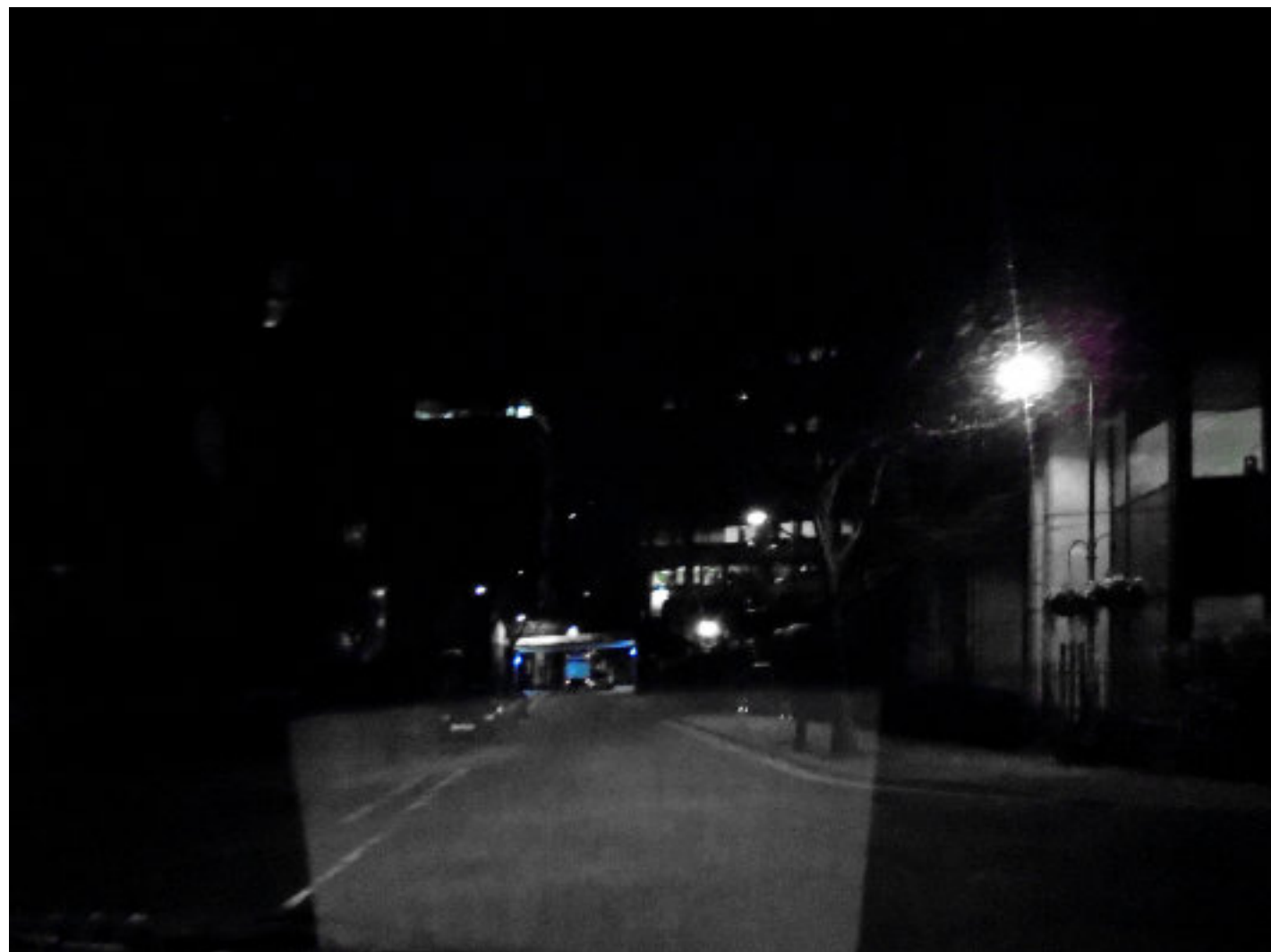


Starry wall of potatoes : Borough High Street

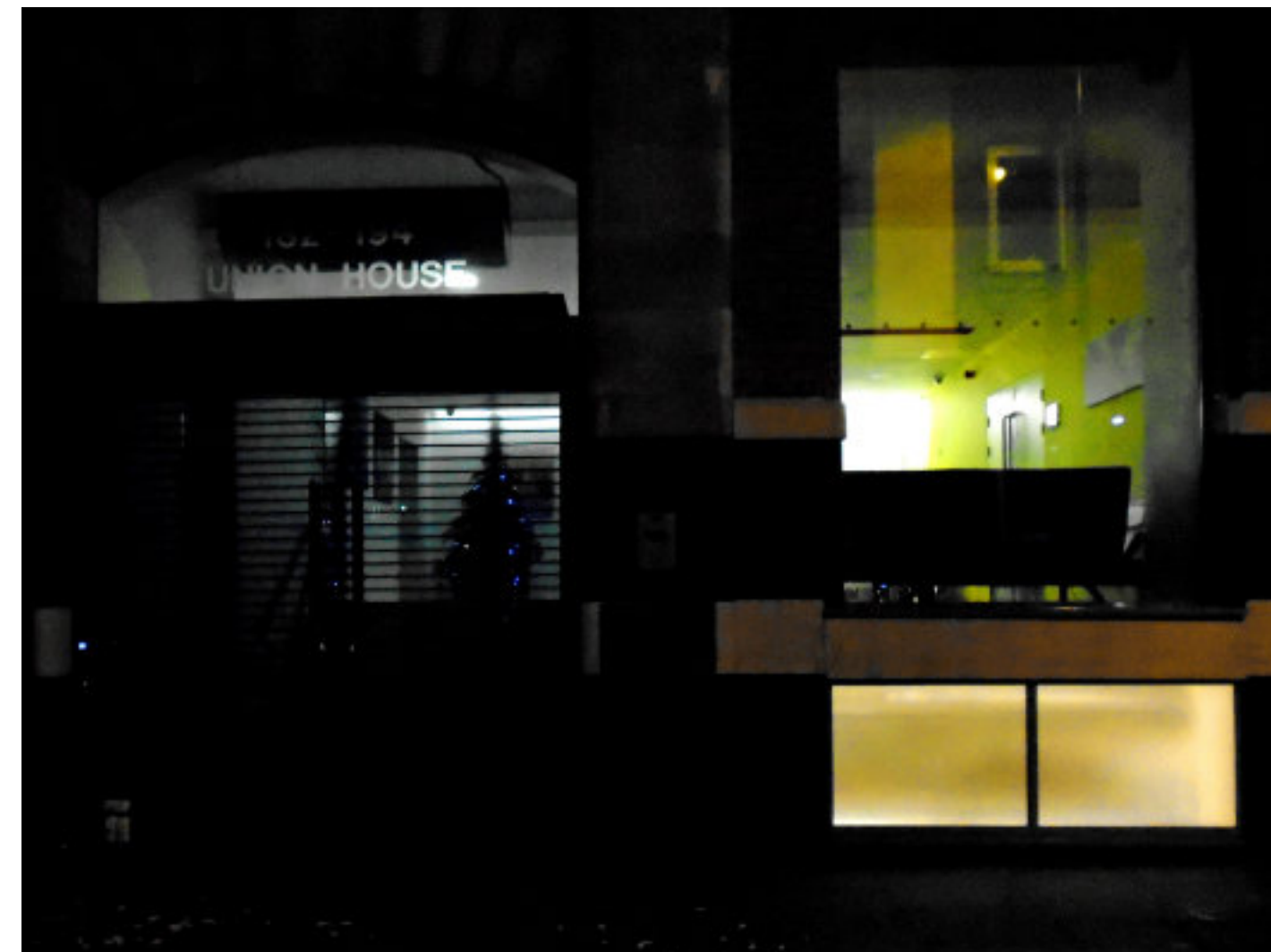
1st prize



Foyer tree : Great Guildford Street



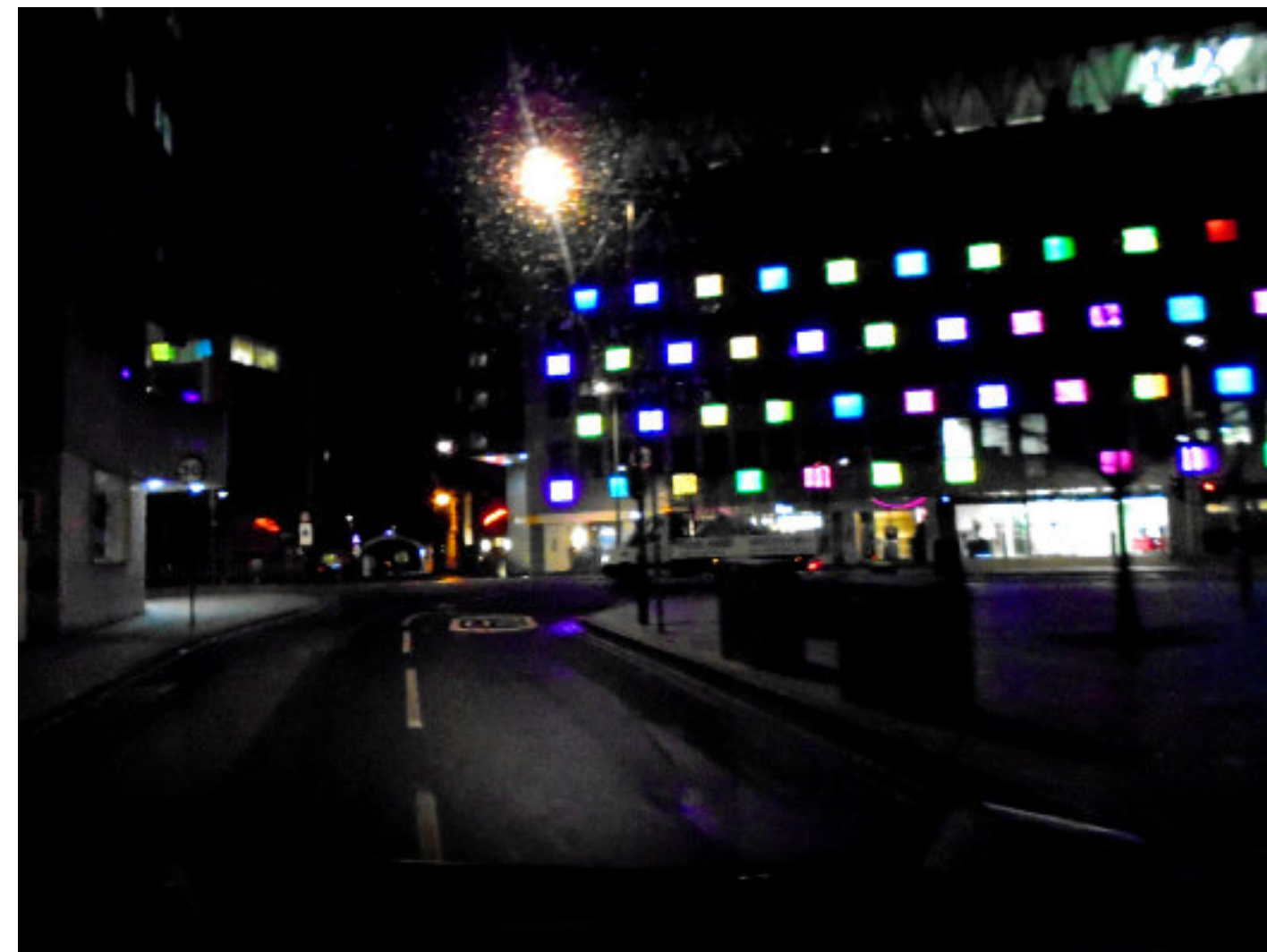
Distant blue: Zoar Street



Lemon foy tree : Union Street



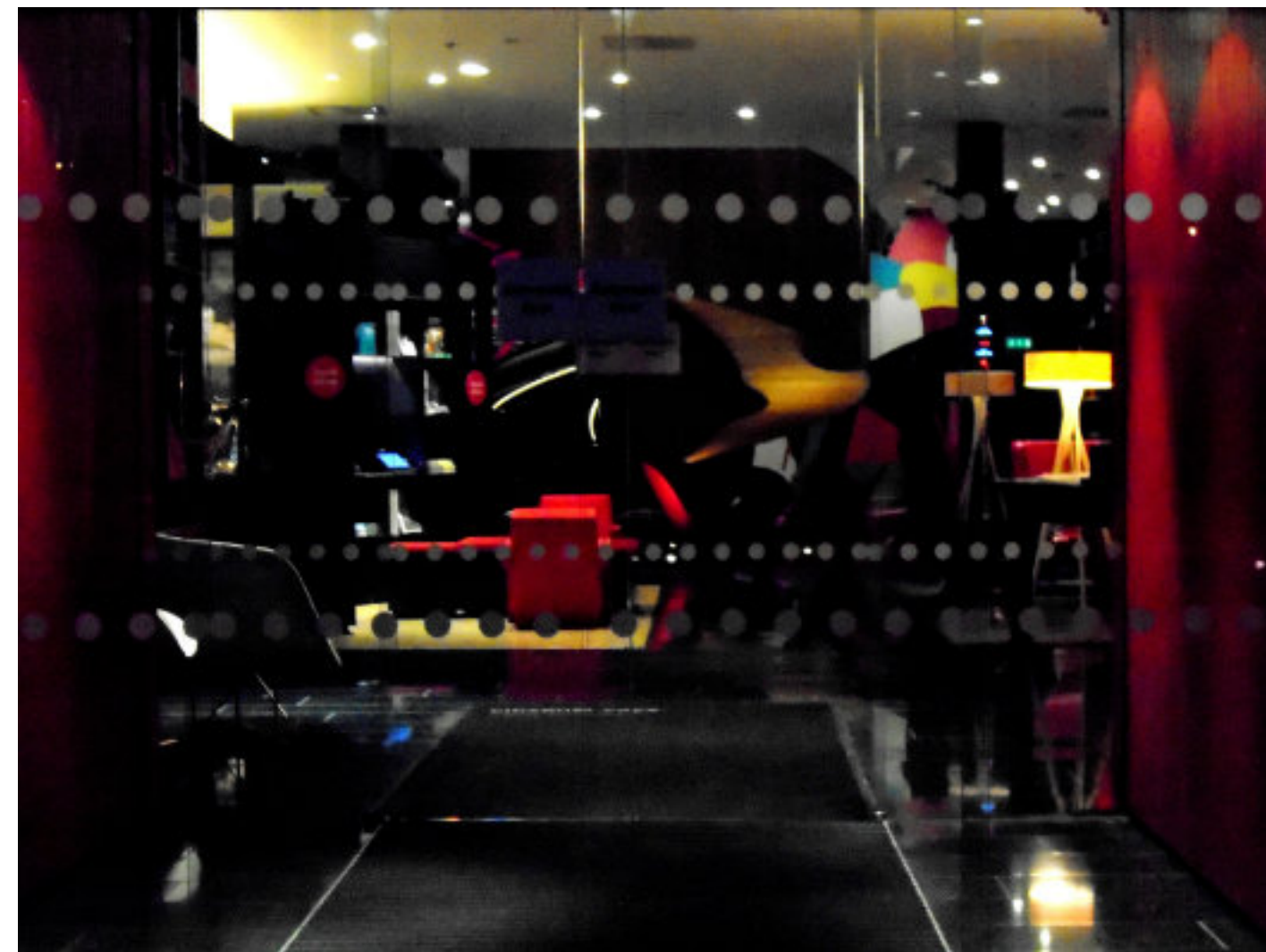
Red tree : Theed Street



Street of coloured squares : Great Guildford Street

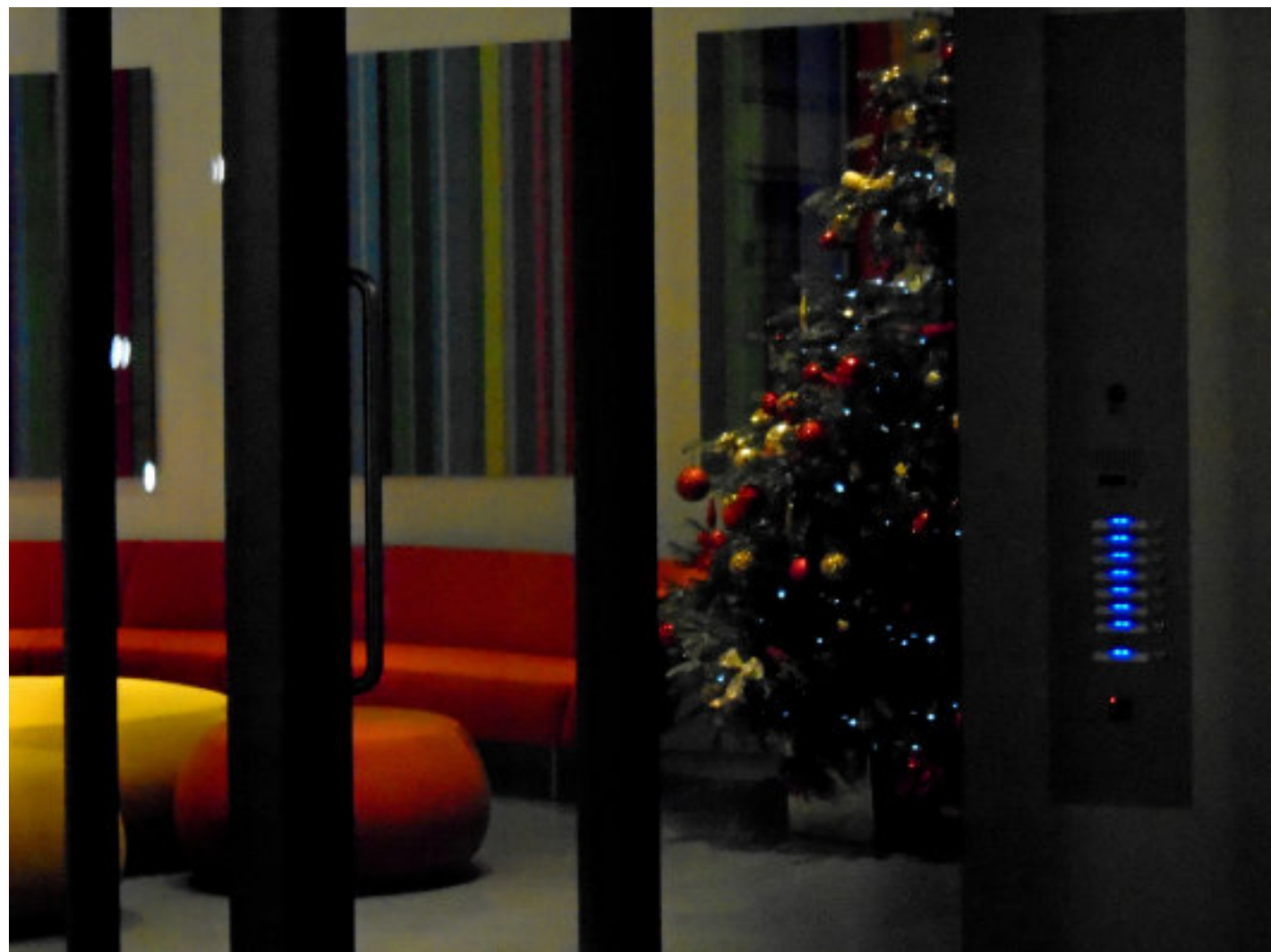


Ghostly scaffolding : Sudrey Street



Bauble foyer : Lexington Street

3rd Prize



Hidden tree with oranges and lemons : Lexington Street



Blue light enclosure : Hopton Street



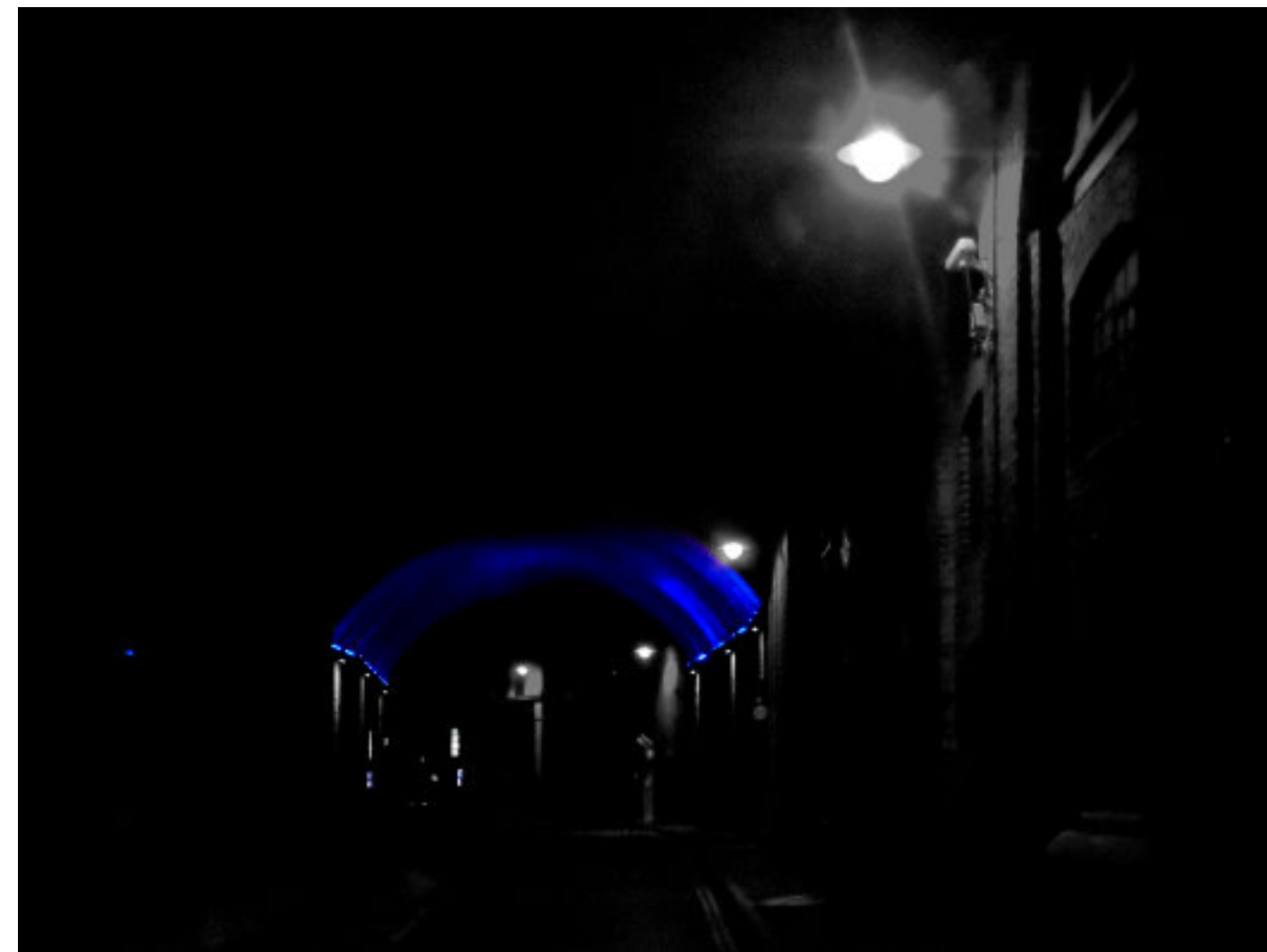
Citizen interior : Lexington Street



Tree and ring in mint : Upper Ground



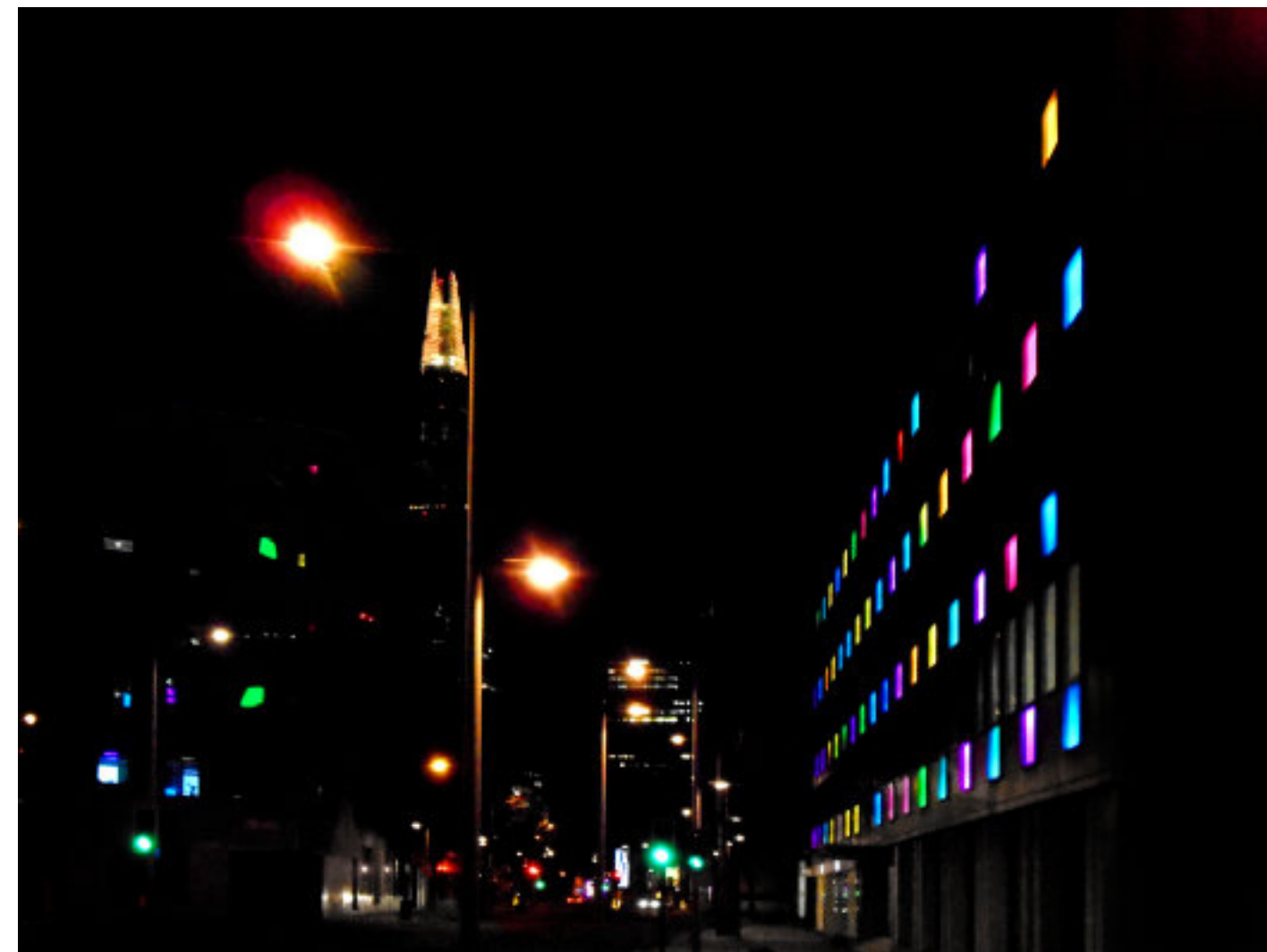
Two arches : Hopton Street



Blue arch : Great Suffolk Street



Solstice Island : Belvedere Road



Shard with constellation : Southwark Street



Blue smartie intersection : Southwark Street

StreetSolstice Prize 2014

Criteria (in no particular order)

- 1) Stupidity per square inch
- 2) Creativity in the face of adversity
- 3) Metaphysical transformation
- 4) Being pretty

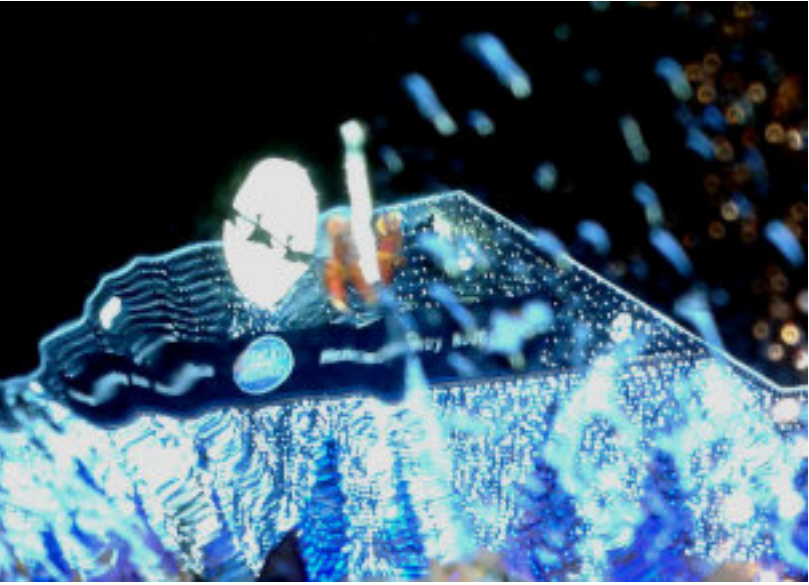
Once again the judges had a difficult time deciding and arguments continued long into the night. We particularly commended the lads at the Blue Fin loading bay who, banned from participating by management, went ahead regardless with their ‘Engines Off’ submission. A big hand for effort. Also Universal House for picking up the slack when the ‘Southwark Street Smarties’ went down.

So, without further ado here are the results...

3rd Prize : Bauble Foyer : Lexington Street. For its complexity and colour dynamic fulfilling (4)

2nd Prize : Pimlico Plumbers through water : Sail Street. Normally an ‘over the top’ display it was lucky to have been photographed just as a biblical deluge took place. Fulfilling handsomely (1) it conspired with the forces of nature to segue into (3)

1st Prize : Tas Restaurant, Borough High Street for its ‘Starry Potato Wall’. Who could have thought that a humble pile of potatoes could have counterpointed what would otherwise have been a pedestrian light display. Pretty and stupid with it it also displayed (2) by coping with the exigencies of having a delivery in the middle of the night. Well done!



StreetSolstice 2014

Photographs taken on my milk round (04) in the London districts of Bankside and the South Bank during the winter solstice holidays 2014

All photographs, layout and texts by Paul Malone

www.plasmazine.co.uk/streetsurfaces

www.paulmalone.co.uk

©Paul Malone 2015



Plasmazine Publishing 2021

www.plasmazine.co.uk