



StreetSolstice 2015

An Observation by Paul Malone

StreetSolstice 2015

It is that Season again.

As the Earth reaches the solstice of its orbit, clearing the city streets of their more pedestrian elements, it falls to the structures of light to inhabit these spaces.

This collection of images, taken on my milk round, covers London’s Bankside and South Bank districts. The landscape this year has been dominated by the Shard and its light project by Jason Bourne Studios.

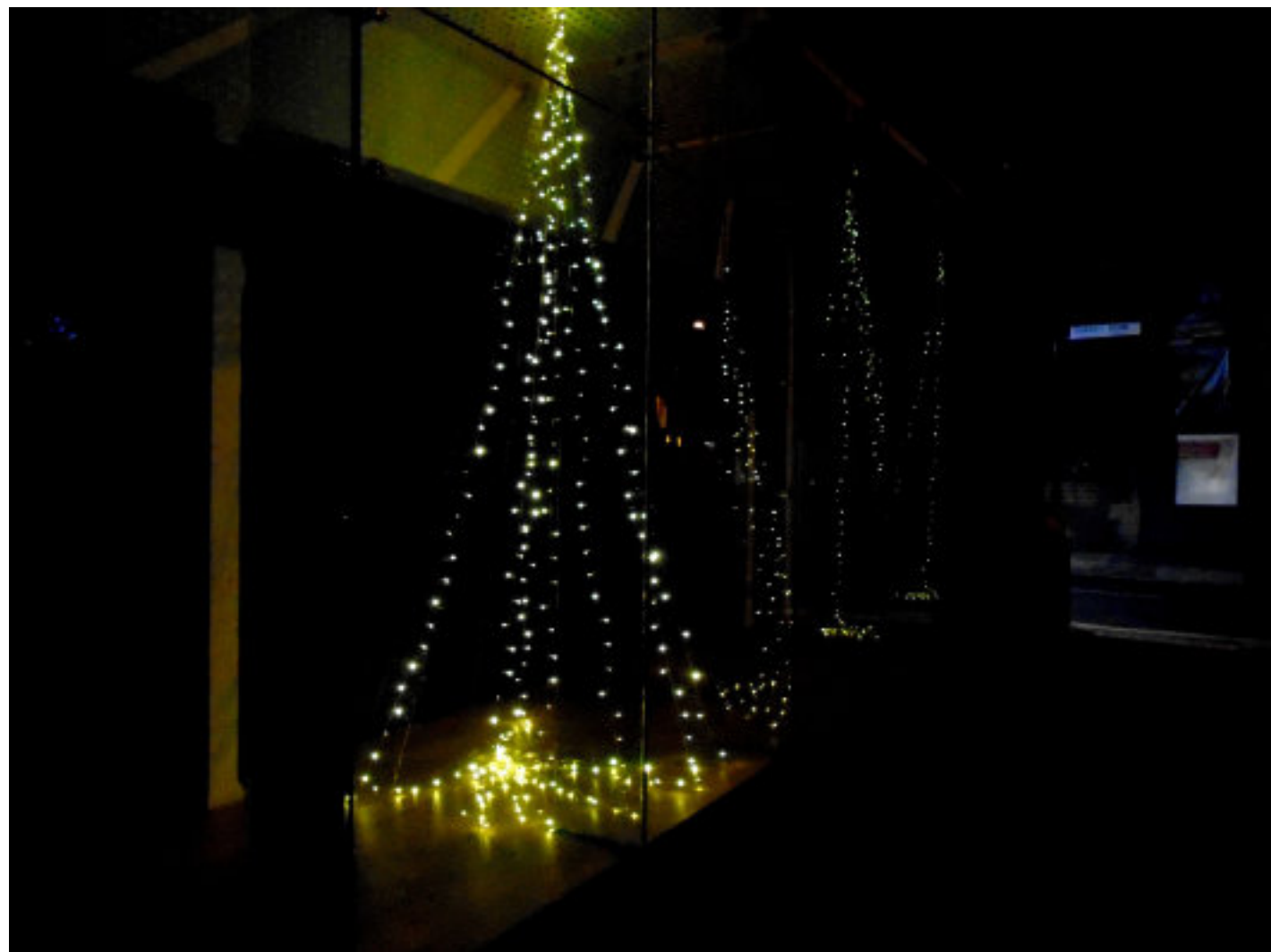
However, lurking deep beneath its apex lies a more intriguing photonic sub-culture. It is the exploration of these, often ‘ad hoc’ expressions that are documented in the following pages. Critics will say that it could all have been a dream; but here is the evidence, is it not? And, as our Sphere swings back into its normalcy, all will be forgotten. As if it had never been, nor spun, however brief, into illumination.

As an aid to navigation, the visitor to these pages may wish to refer to such concepts as contained within the forbidden texts of Newton’s alchemical researches, the ‘Ballistic Light’ theory of Walther Ritz (d1909) and the contemporary papers of Miles Mathis’ Un-unified Field.

As usual, there will be the annual StreetSolstice Prize for that project which defines these conceits. The theme this year is ‘Reflections’.

Paul Malone 2015

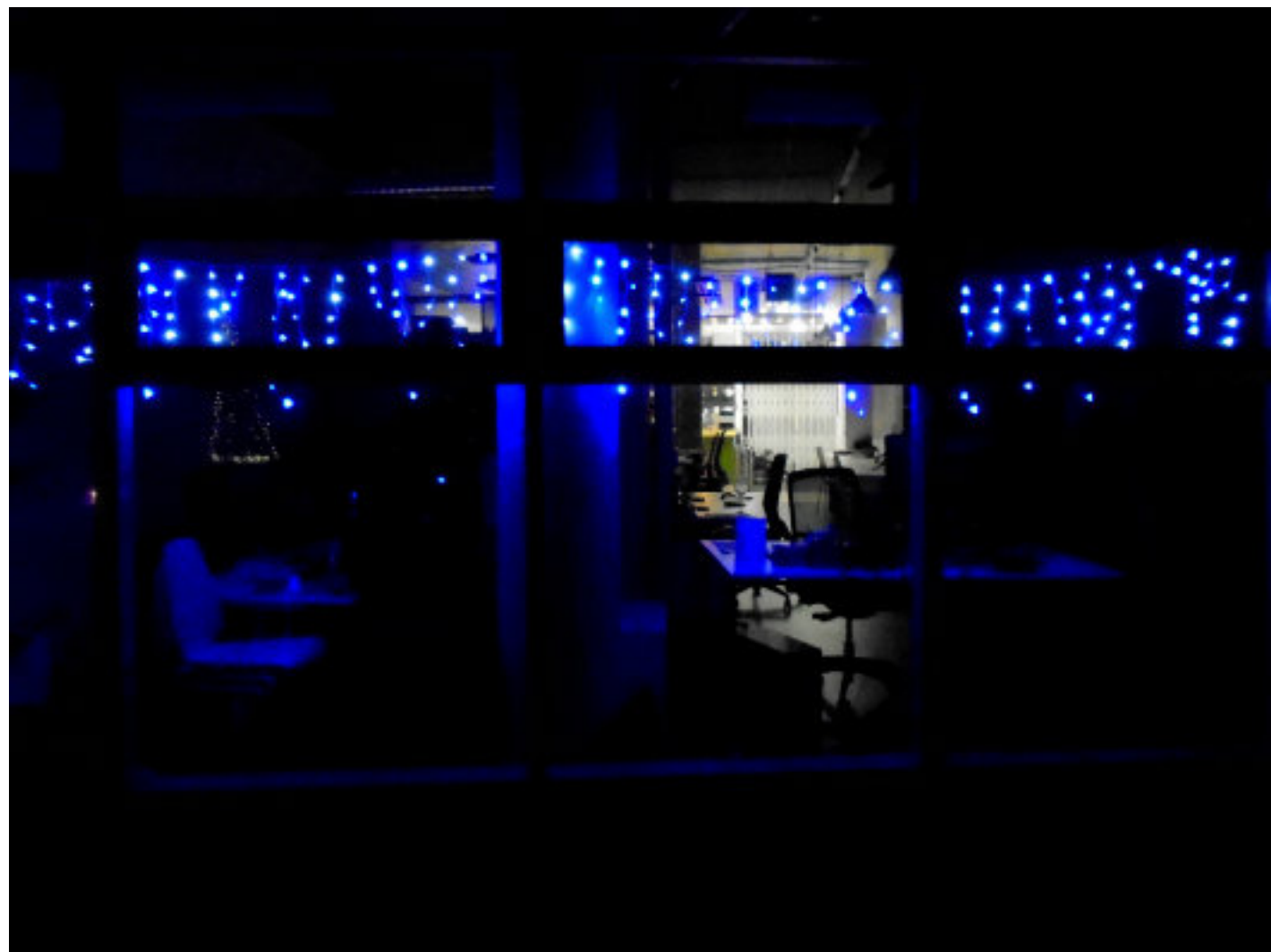




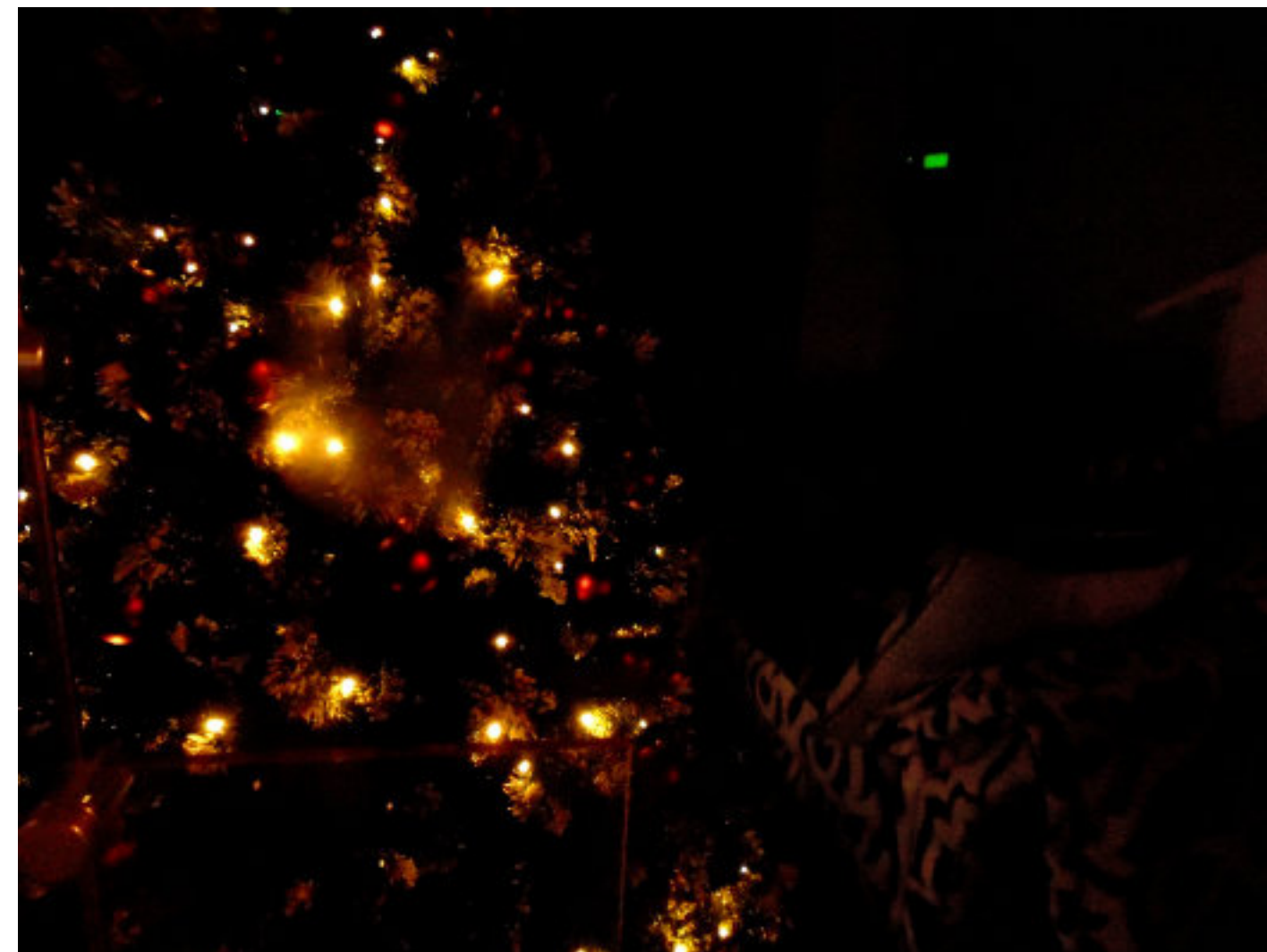
Yellow Tree Reflections : GP Studio, Great Suffolk Street
First Prize



High Tree : Great Suffolk Street



Blue Interior : Great Suffolk Street



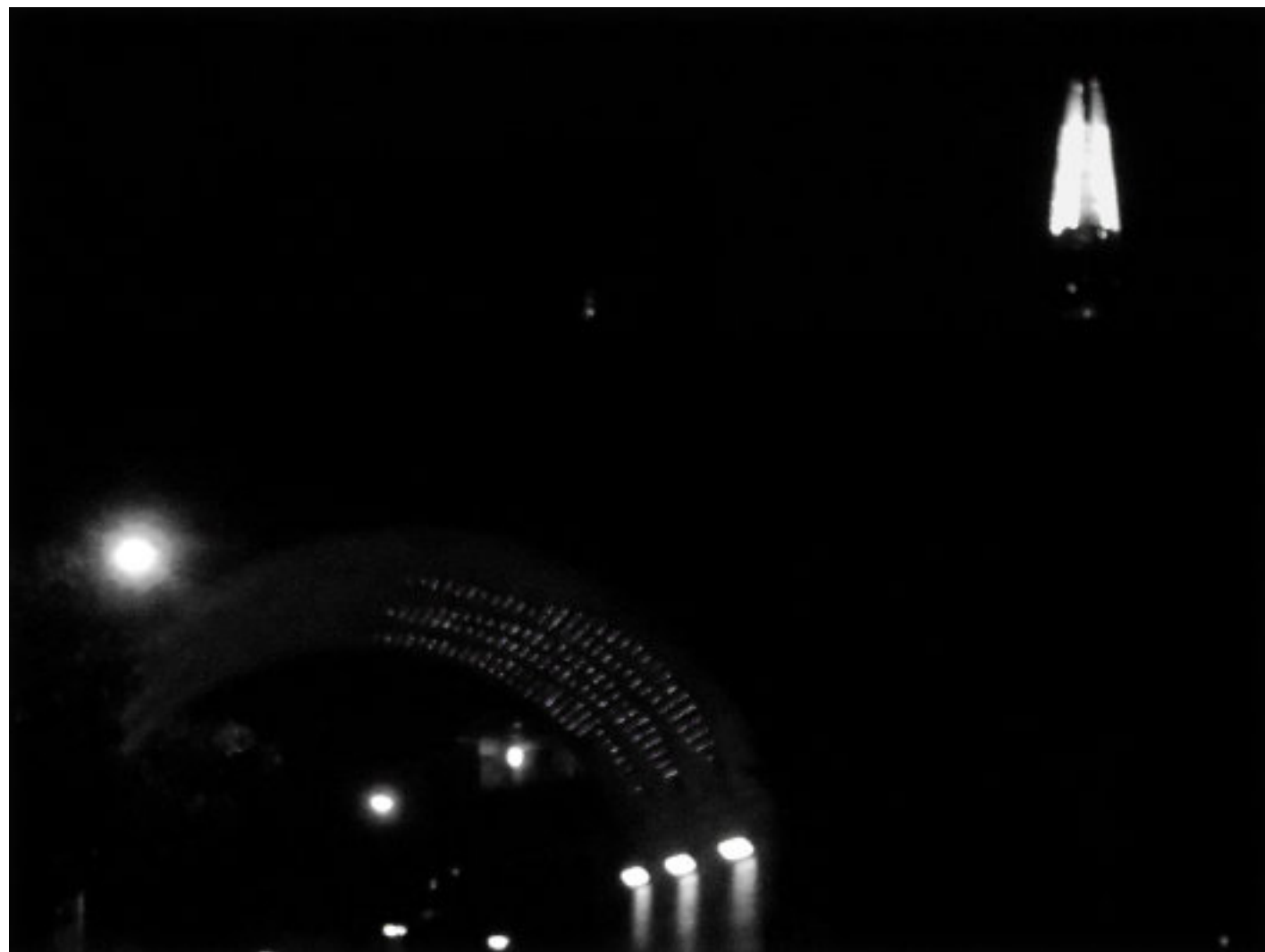
Golden Interior : Borough High Street



ReJoice : Union Street



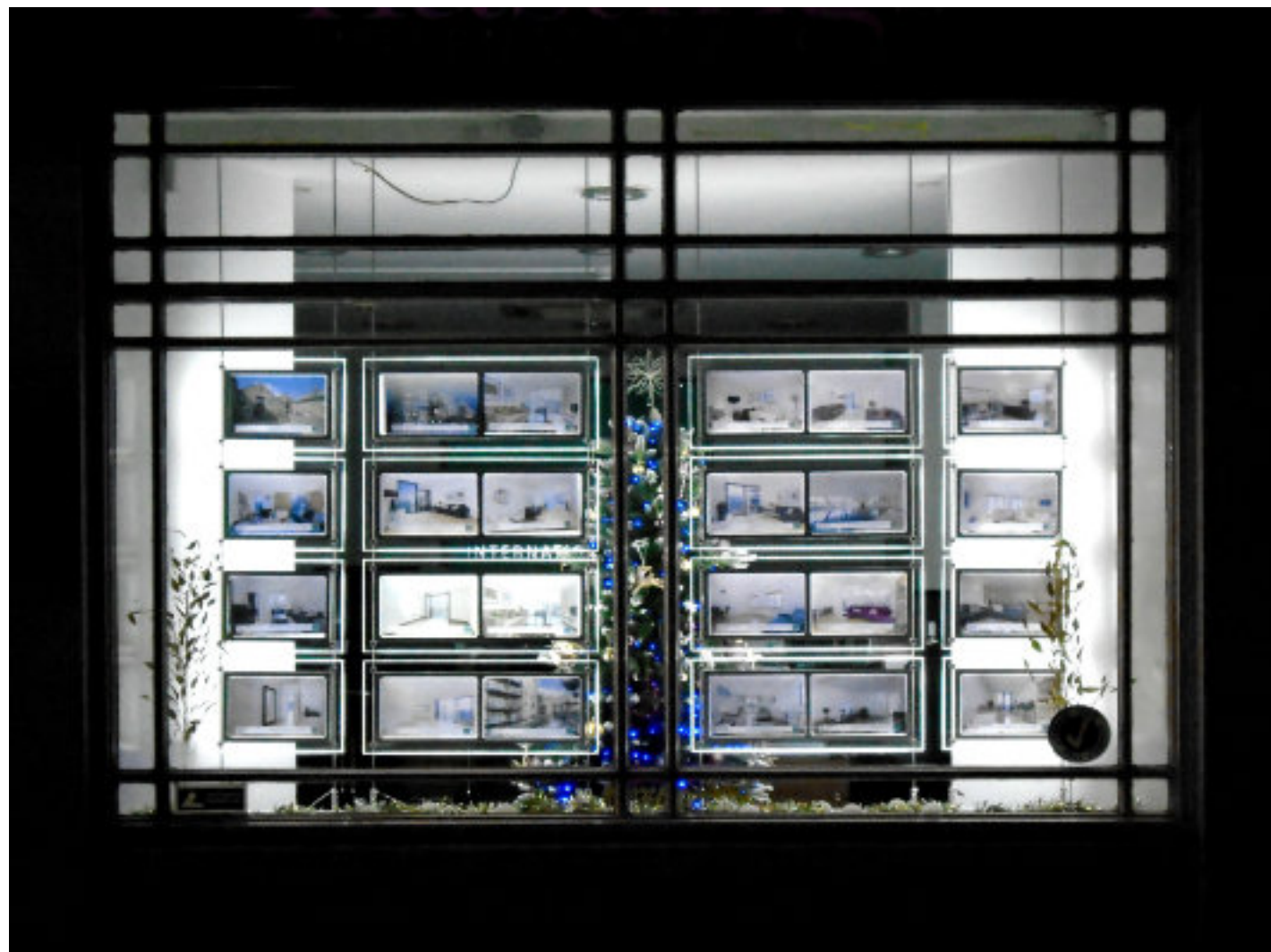
Festive Forklifts : Borough Market
Third Prize



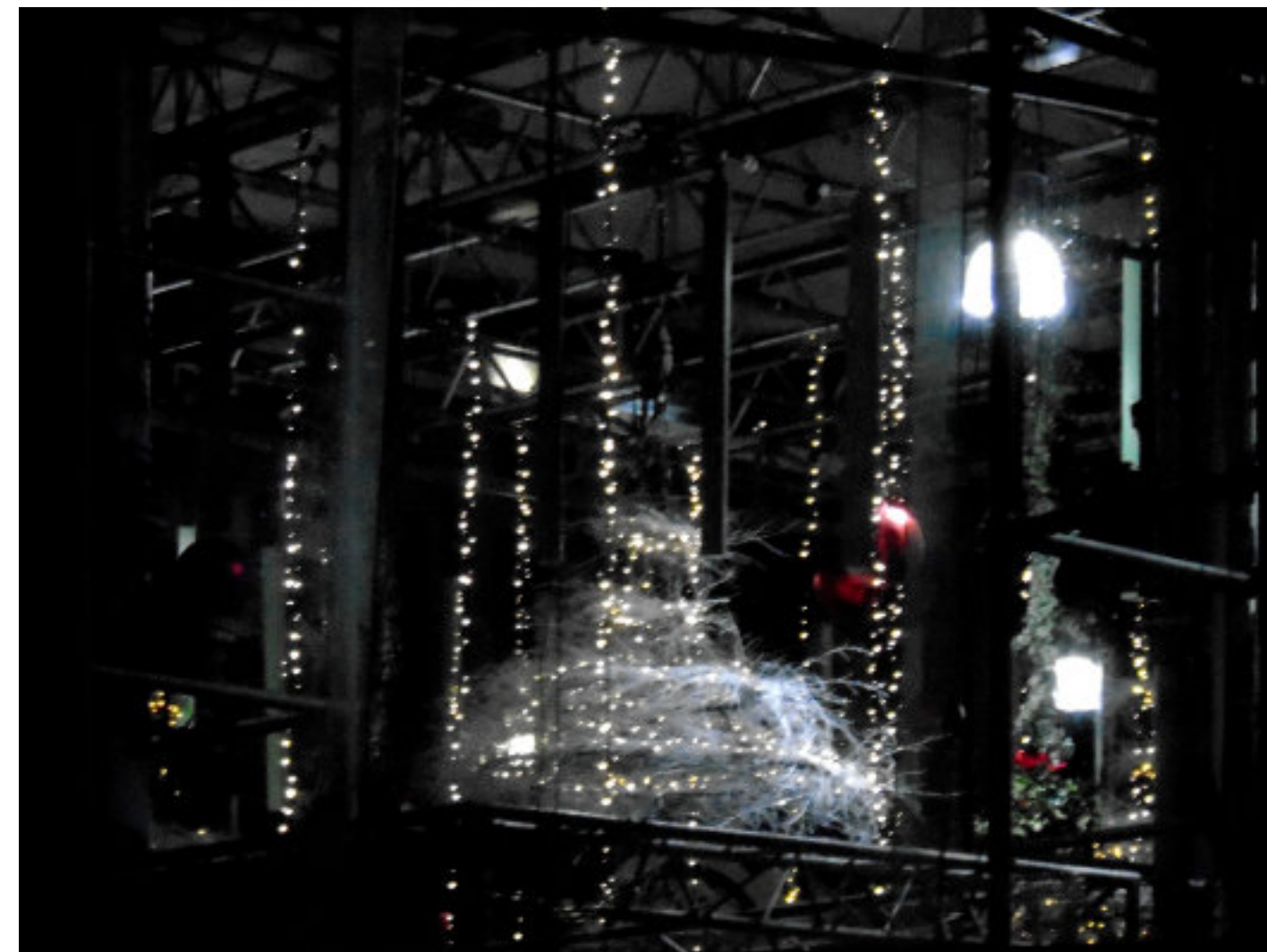
406 Arch with Shard : Burrell Street



Still Life with Flourescent Light : Gambia Street



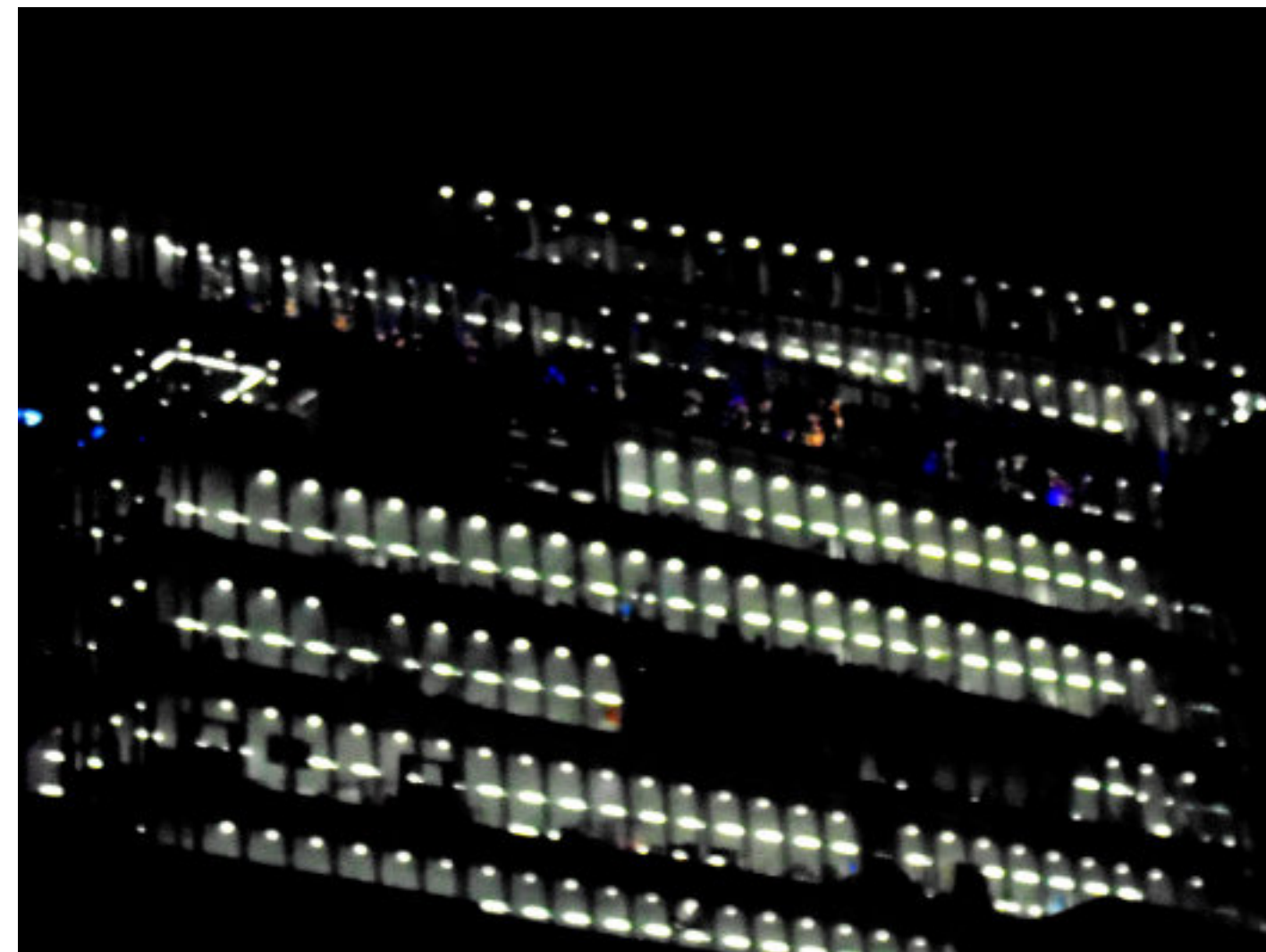
Hidden Tree (with property) : Borough High Street



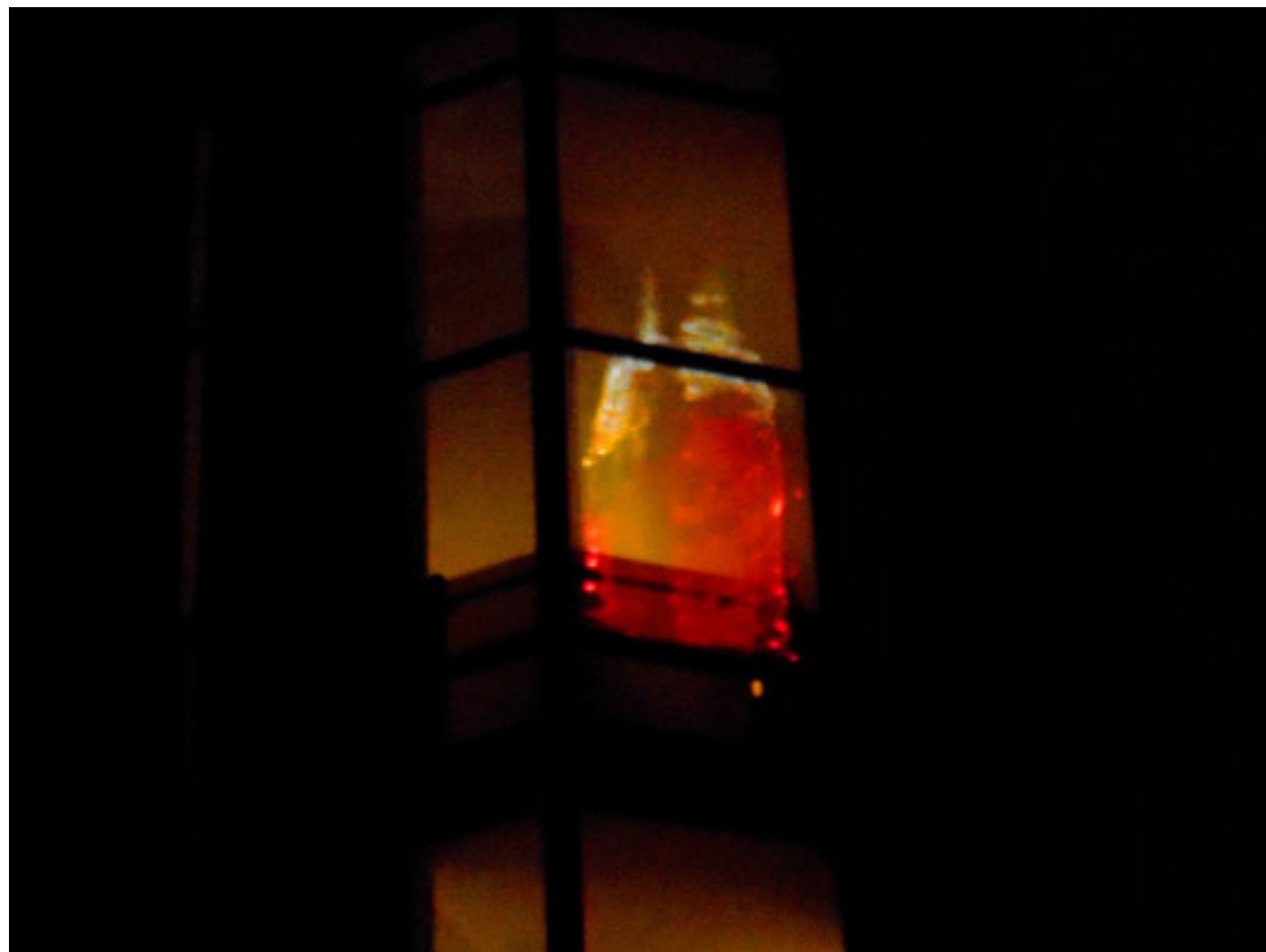
Light Atrium : Cathedral Street



Tree Arch 15 : Borough Market



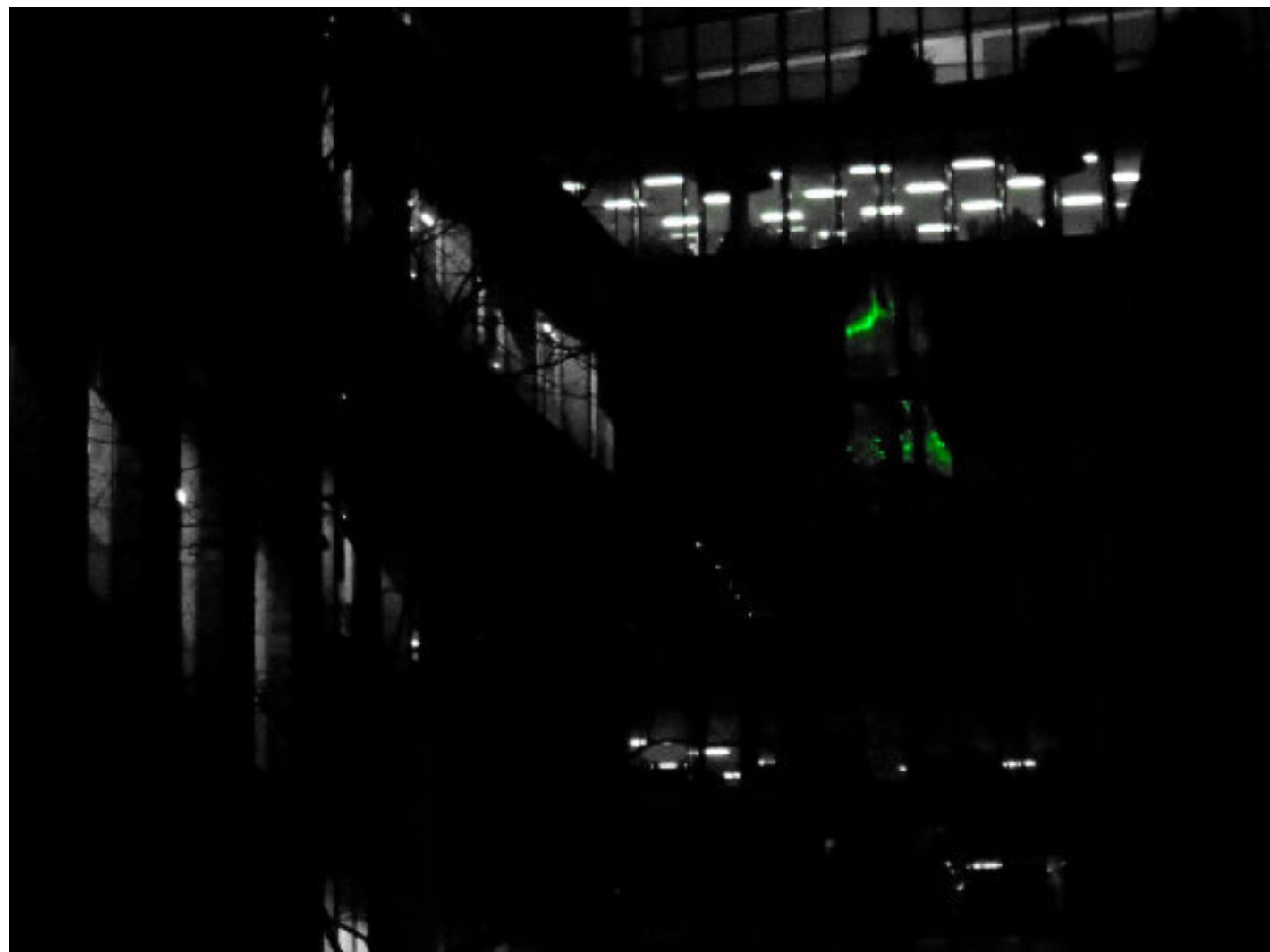
Hanging Lights : London Bridge



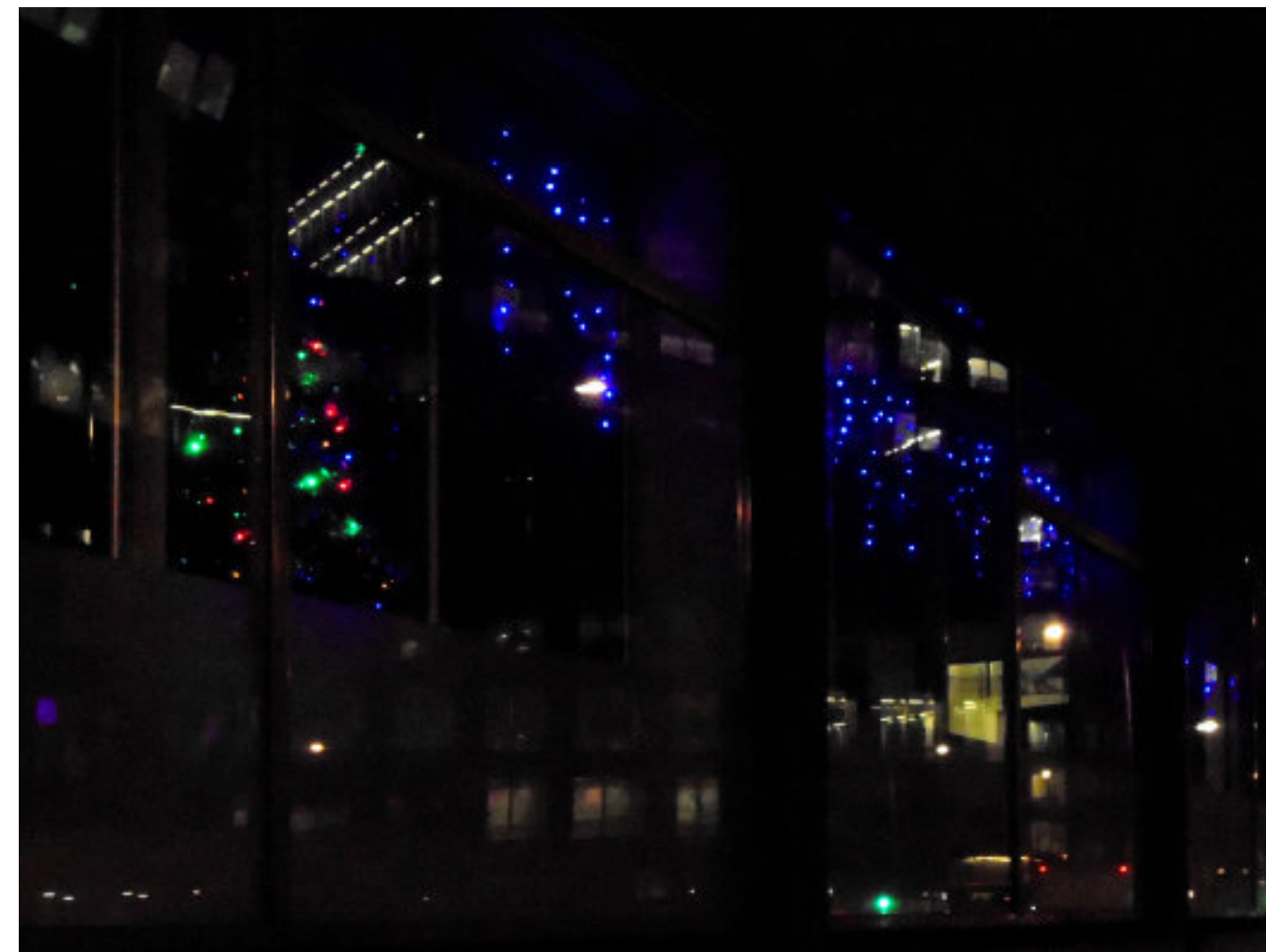
Shard Reflected : Montague Close



Blue Dots : Park Street



Green Shard Reflected : Zoar Street



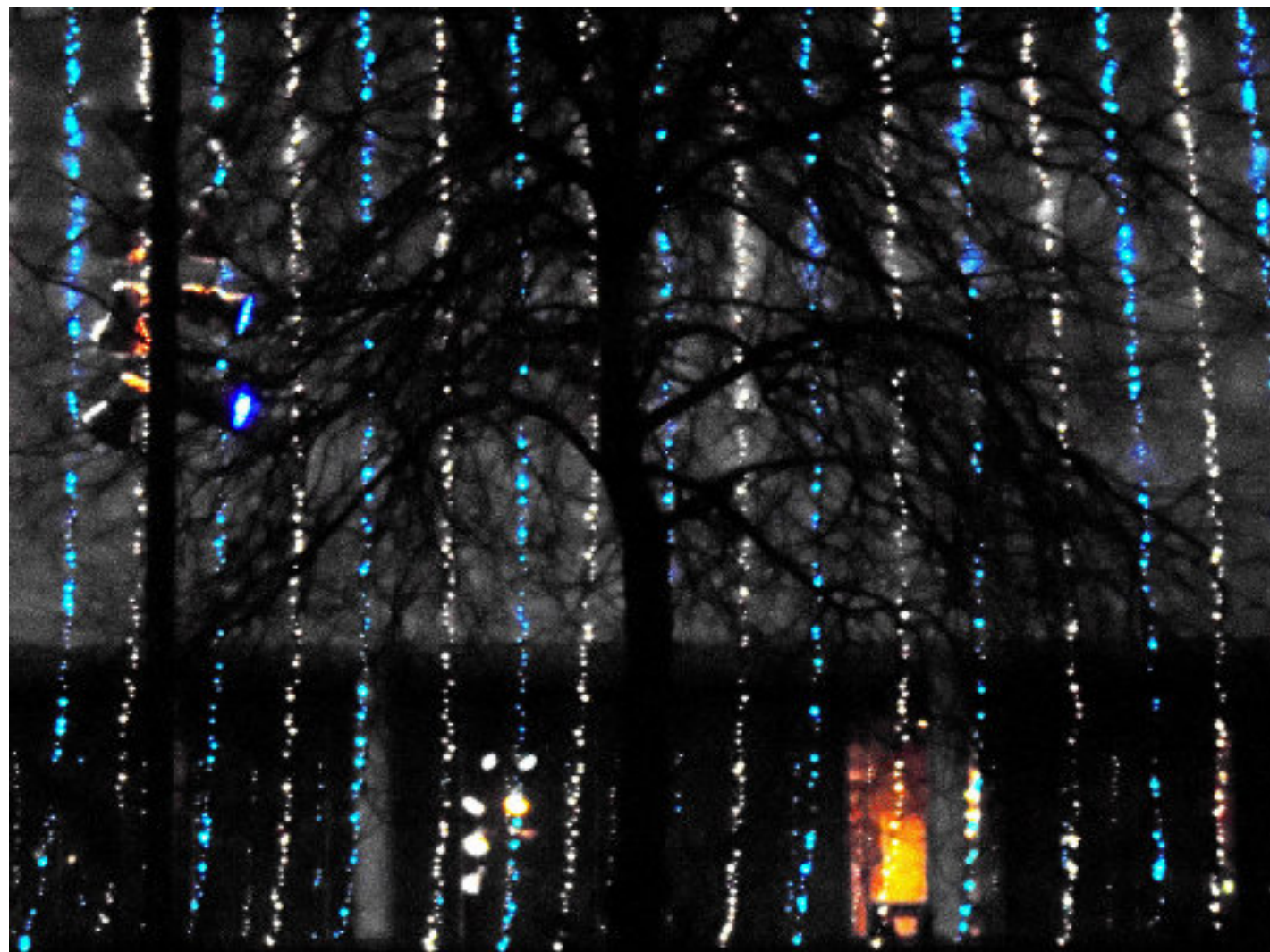
Blue Lights, Tree and Reflections : Southwark Street



Tree with Revolving Door : Paris Garden



Tree on Red Carpet : Hatfields



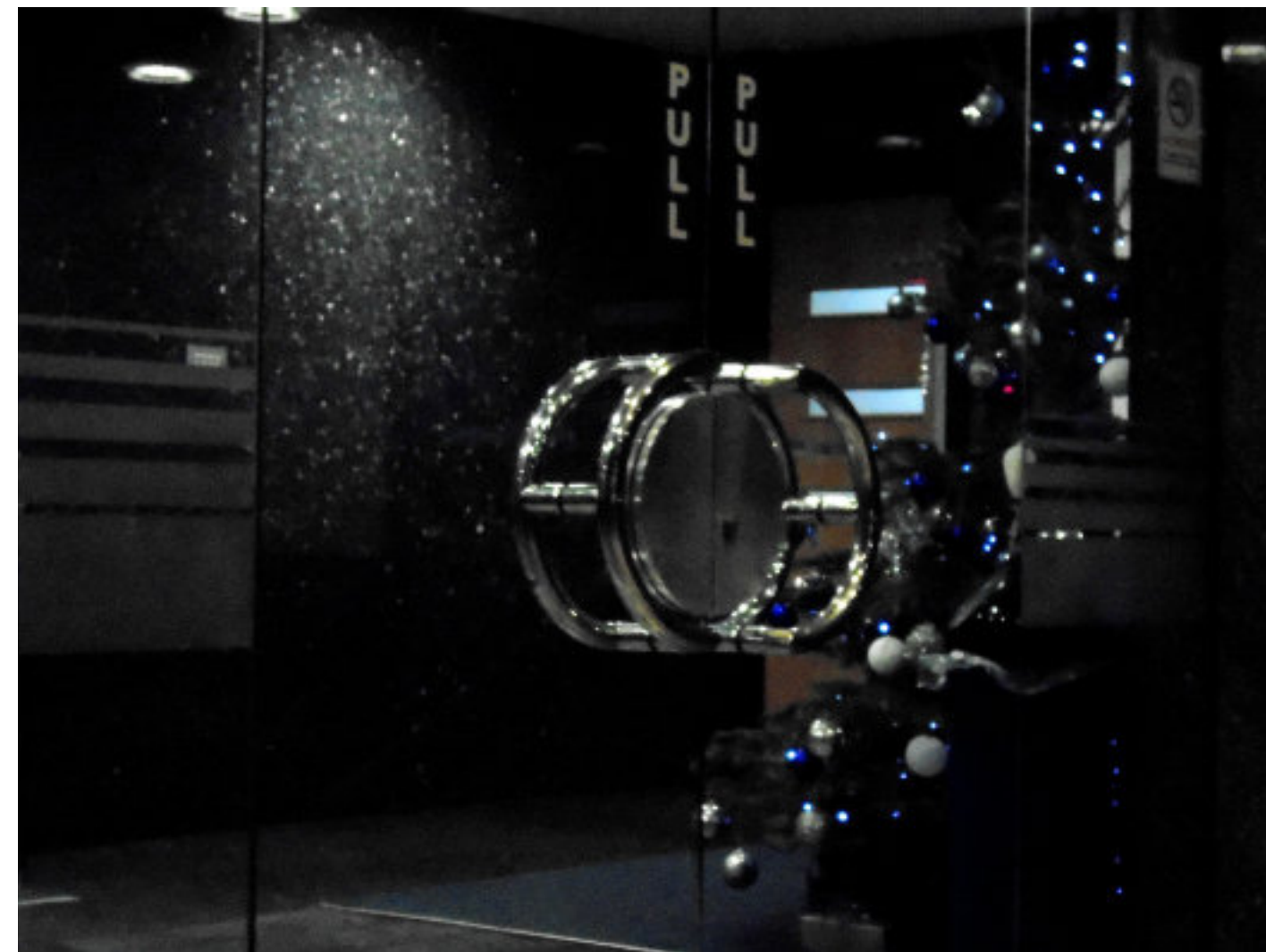
Tree with Light Curtain : Royal Festival Hall



Yellow Tree Reflection : Southwark Bridge Road



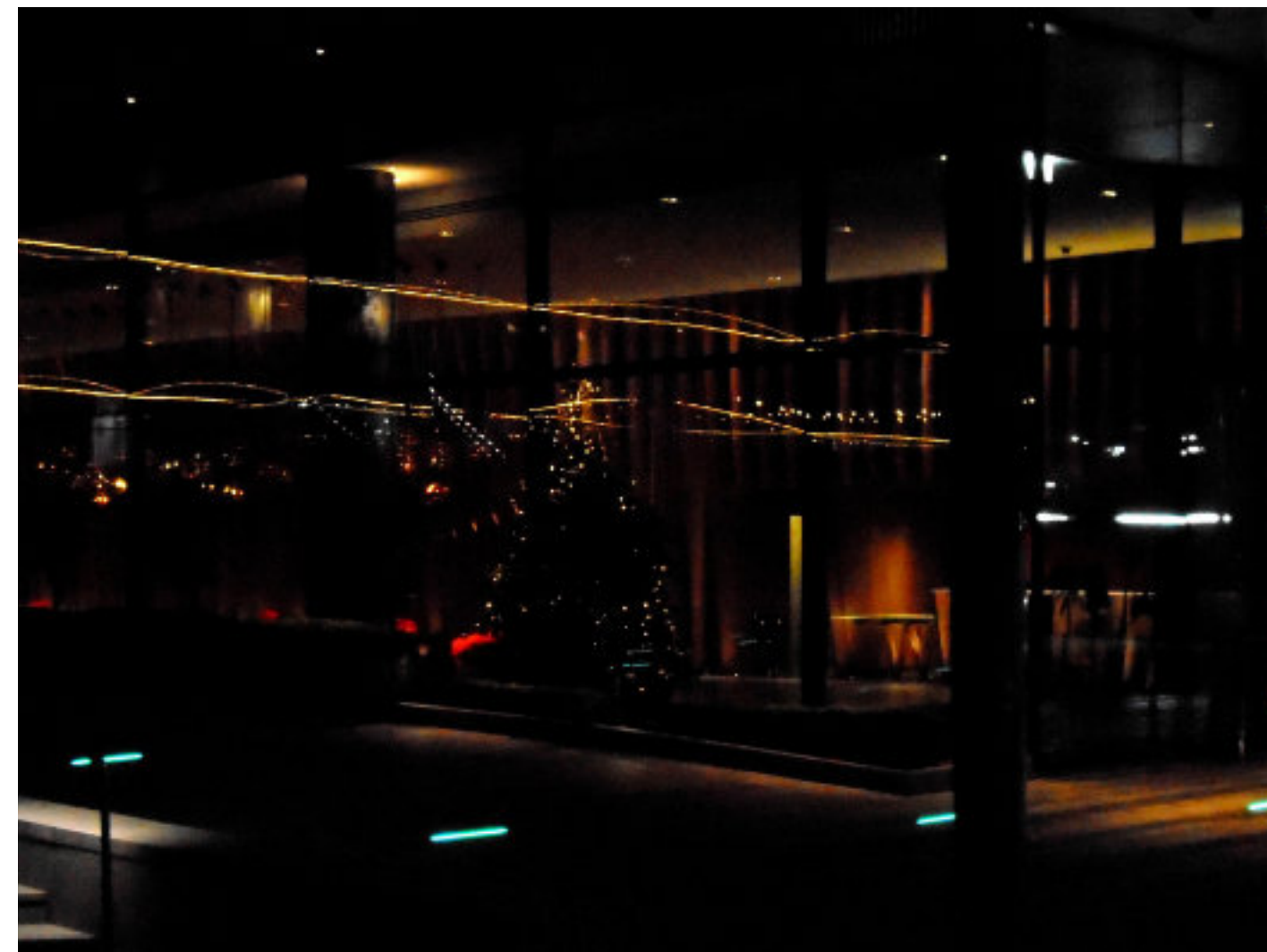
Green Bottle : (off) Great Guildford Street



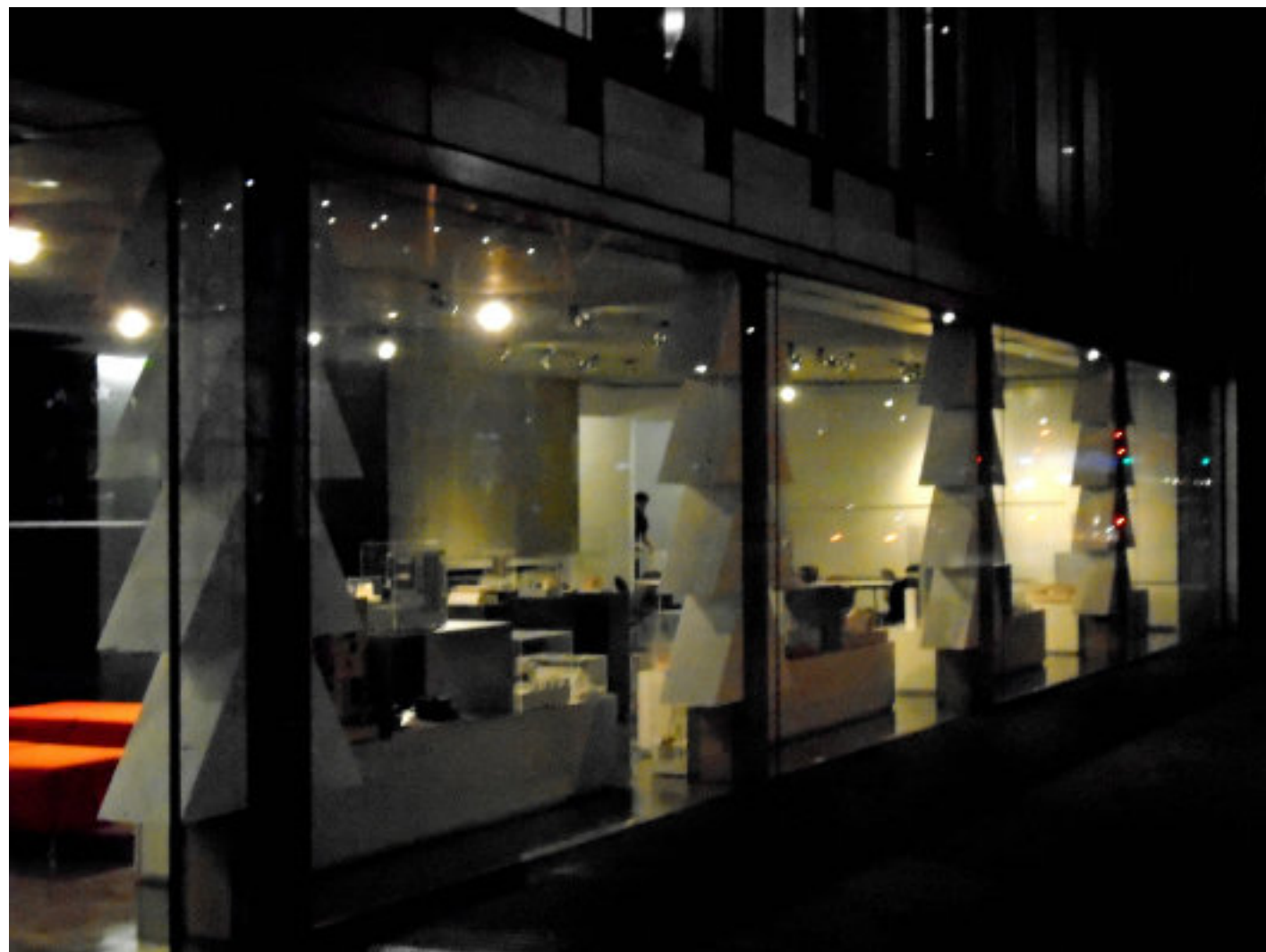
Tree with Door Handles : Blackfriars Road



Adoptive Smarties : Southwark Street



Red Interior Tree : Bargehouse Crescent



Pillar Trees : Southwark Street



Light Tree, Winter Tree : Hatfields
Second Prize



Tree with Reflected Text : Great Guildford Street

StreetSolstice Prize 2015

Criteria (in no particular order)

- 1) Stupidity per square inch
- 2) Creativity in the face of adversity
- 3) Metaphysical transformation
- 4) Being pretty

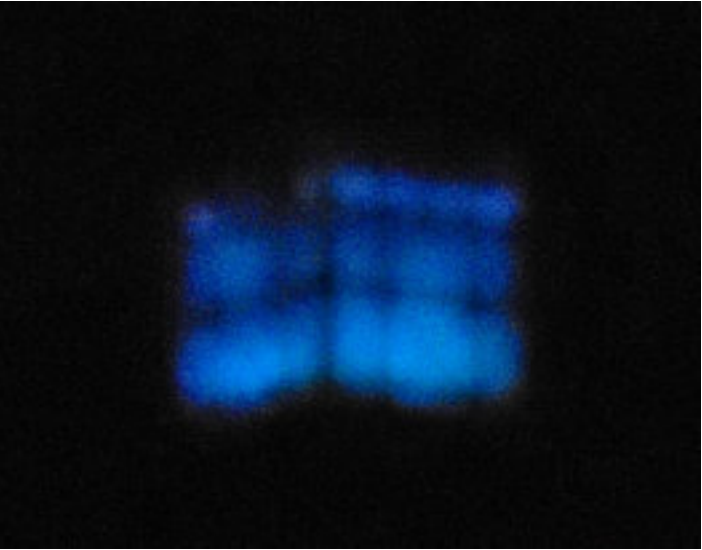
Once again the judges had a difficult time deciding and arguments continued long into the night. We particularly commended the lads at the Blue Fin loading bay who, banned from participating by management, went ahead regardless with their ‘Engines Off’ submission. A big hand for effort. Also Universal House for picking up the slack when the ‘Southwark Street Smarties’ went down.

So, without further ado here are the results...

3rd Prize : Festive Forklifts. For their entertaining interpretation of criterion (1)

2nd Prize : Light Tree, Winter Tree. Though it may not have been intended, their submission counter-pointed nicely with the tree outside to fulfil (3). It also participated in the excellent Bargehouse Crescent experience to fulfil (4) and, as the South Bank Tower has only just been completed, it was a sterling effort to fulfil (2)

1st Prize : Yellow Tree Reflections. Not only did GP Studios fulfil (4) handsomely with its use of internal reflections (the 2015 theme) it also complemented successfully in the excellent Great Suffolk Street node. The interpretation of what it is to be a tree fulfilled (3). However, since the business suffered a severe break-in this year, it has to win First Prize for rebounding (2).



StreetSolstice 2015

Photographs taken on my milk round (04) in the London districts of Bankside and the South Bank during the winter solstice holidays 2015

All photographs, layout and texts by Paul Malone

www.plasmazine.co.uk/streetsurfaces

www.paulmalone.co.uk

©Paul Malone 2016



Plasmazine Publishing 2021

www.plasmazine.co.uk