



# StreetSolstice 2016

An Observation by Paul Malone

## StreetSolstice 2016

It is that Season again.

As the Earth reaches the solstice in its orbit, clearing the city streets of their more pedestrian elements, it falls to the structures of light to inhabit these spaces. This collection of images, taken on my milk round, covers London's Bankside and South Bank districts.

As usual it has been a hard task to award the prizes as all the participants were worthy of our acclaim. Though the winner includes the motif of the Union Jack, not here the divisions that marked this Brexit year. Such economic-political considerations are swept aside in the enthusiasm of the moment. For light knows no boundaries and the populations that herein participate express their denominations along vertical axes.

Colour continues to be the predominant means that characterises the experiments each location chooses to promote. Not just the light itself but passive elements the act as containers and reflectors.

This year, as before, we will now judge the annual StreetSolstice Prize for that project which best defines these conceits. In keeping with the extensive corporate colonisation that this district of London has been undergoing, the theme this year is 'Foyers'.

First Prize goes to ComputaCenter, Blackfriars Road, SE1

*Paul Malone 2016*



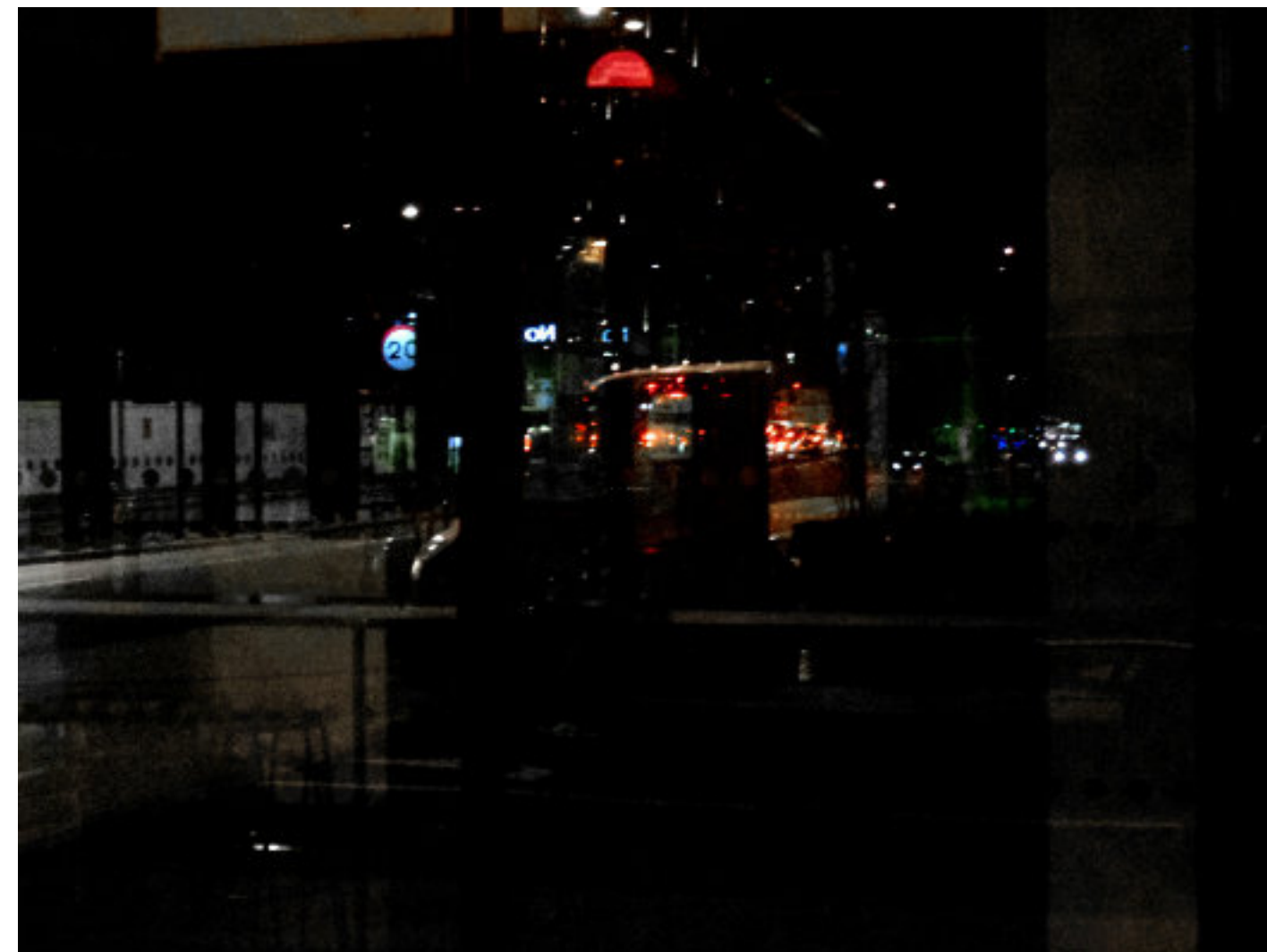
StreetSolstice 2016  
An Observation by Paul Malone



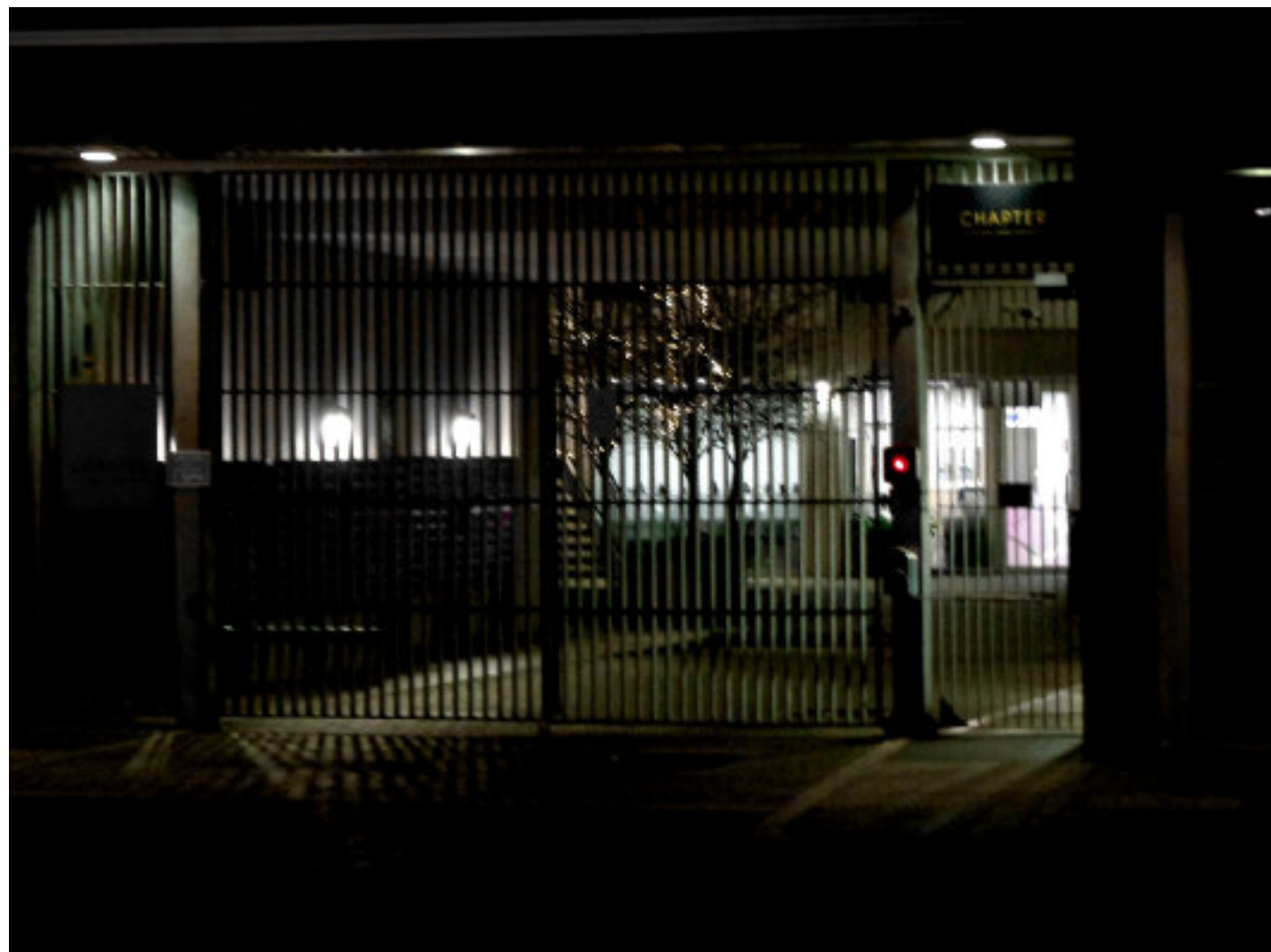


Still Life with Tree : ComputaCenter, Blackfriars Road

*First Prize*



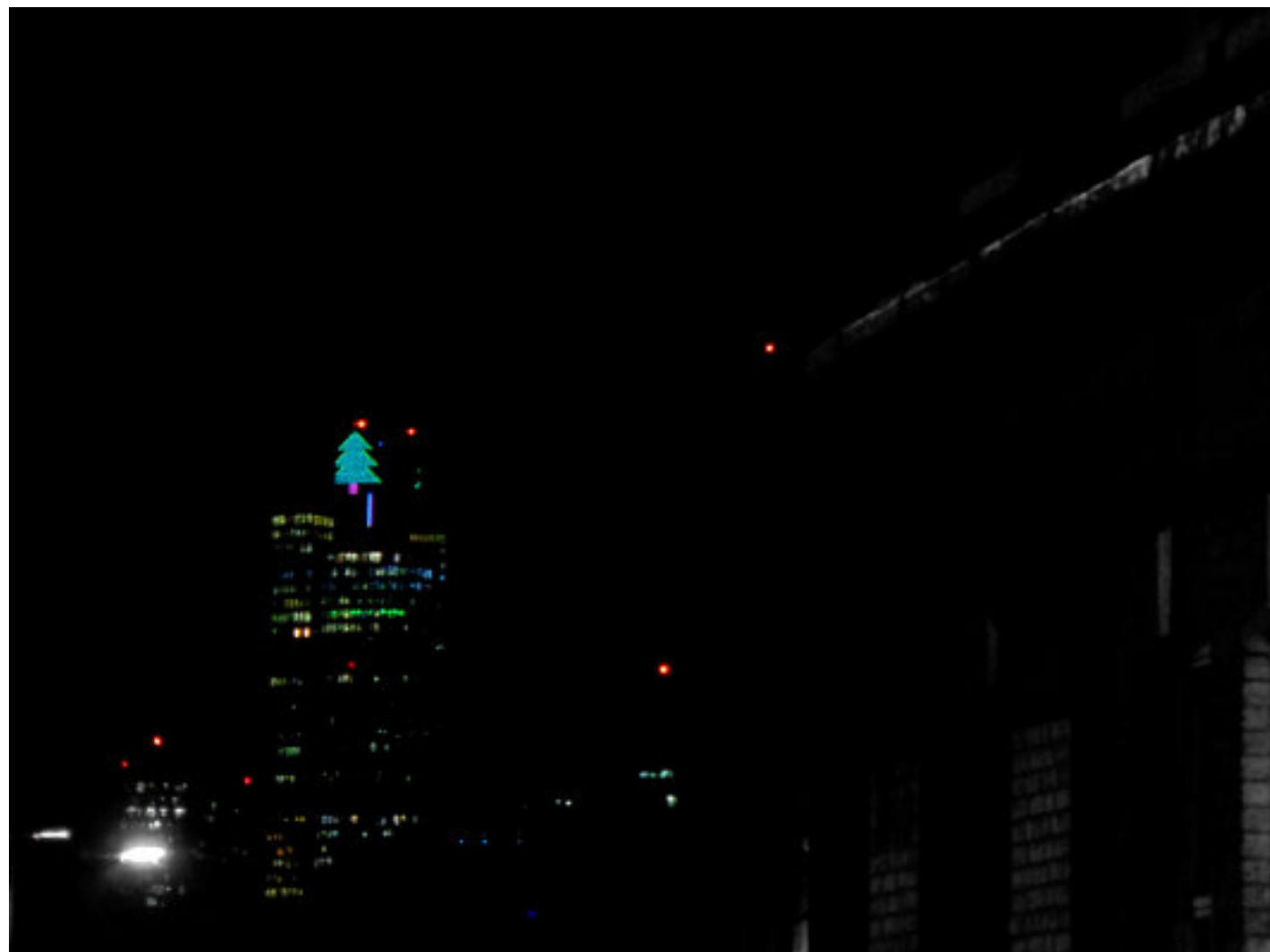
20 mph : Burrell Street



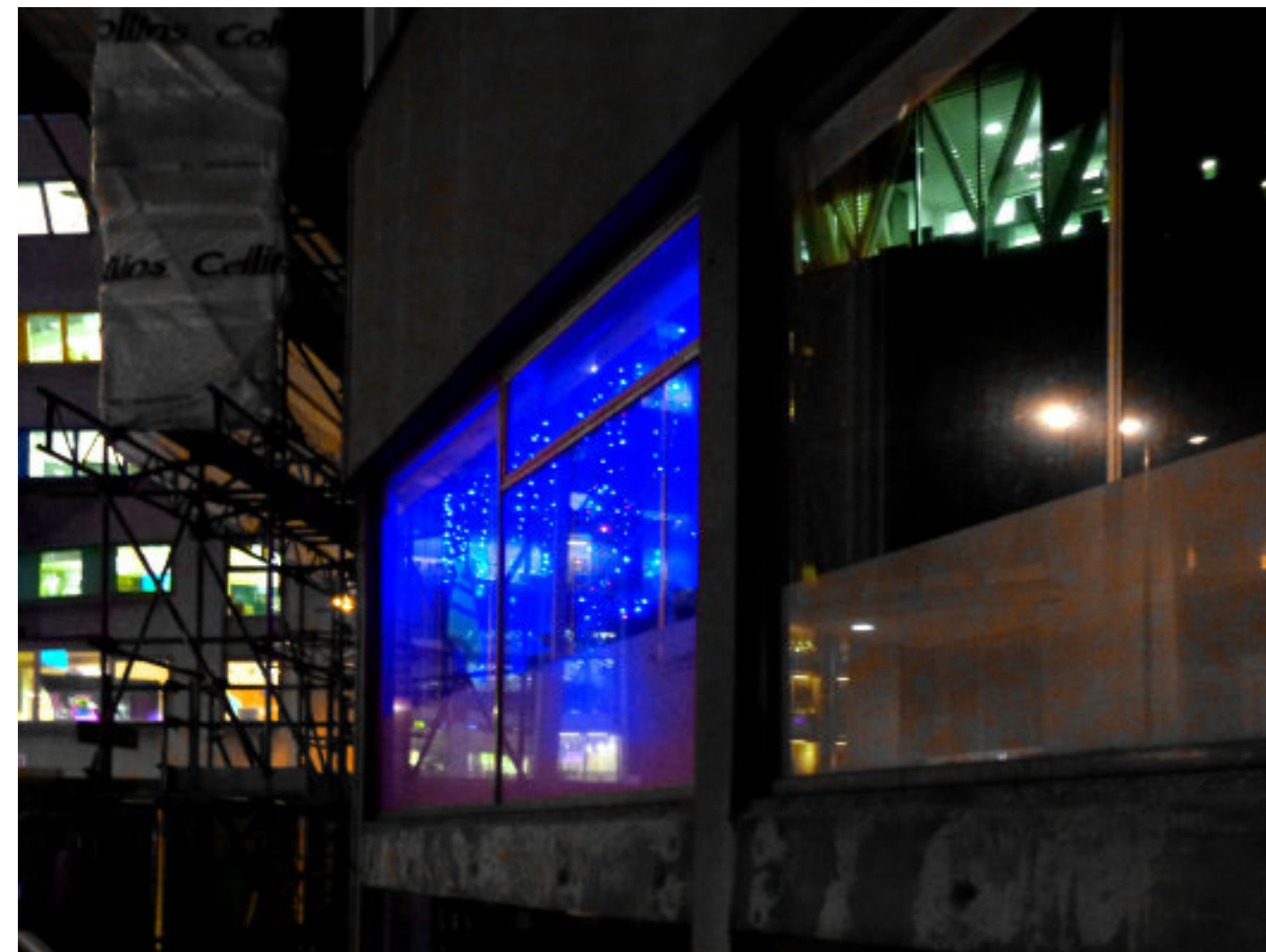
Student Hostel : Great Suffolk Street



Illy Cafe: Union Street



LED Tree: NatWest Building from London Bridge



Blue Site Office : Great Guildford Street





Hotel Foyer : Southwark Bridge Road



Foggy Shard : Red Cross Gardens



Hanging Cards : Metal Box Factory, Great Guildford Street



Tree Checkerboard : Blue Fin Building, Southwark Street





Tropical Foyer : Blue Fin Building, Southwark Street



Golden Angel : Paris Gardens





Lights with Taxis : Upper Ground



Window Cross : Great Guildford Street



Roundabout : Whitehouse Apartments



Light Tree, Dark Tree : Park Plaza Hotel  
Third Prize

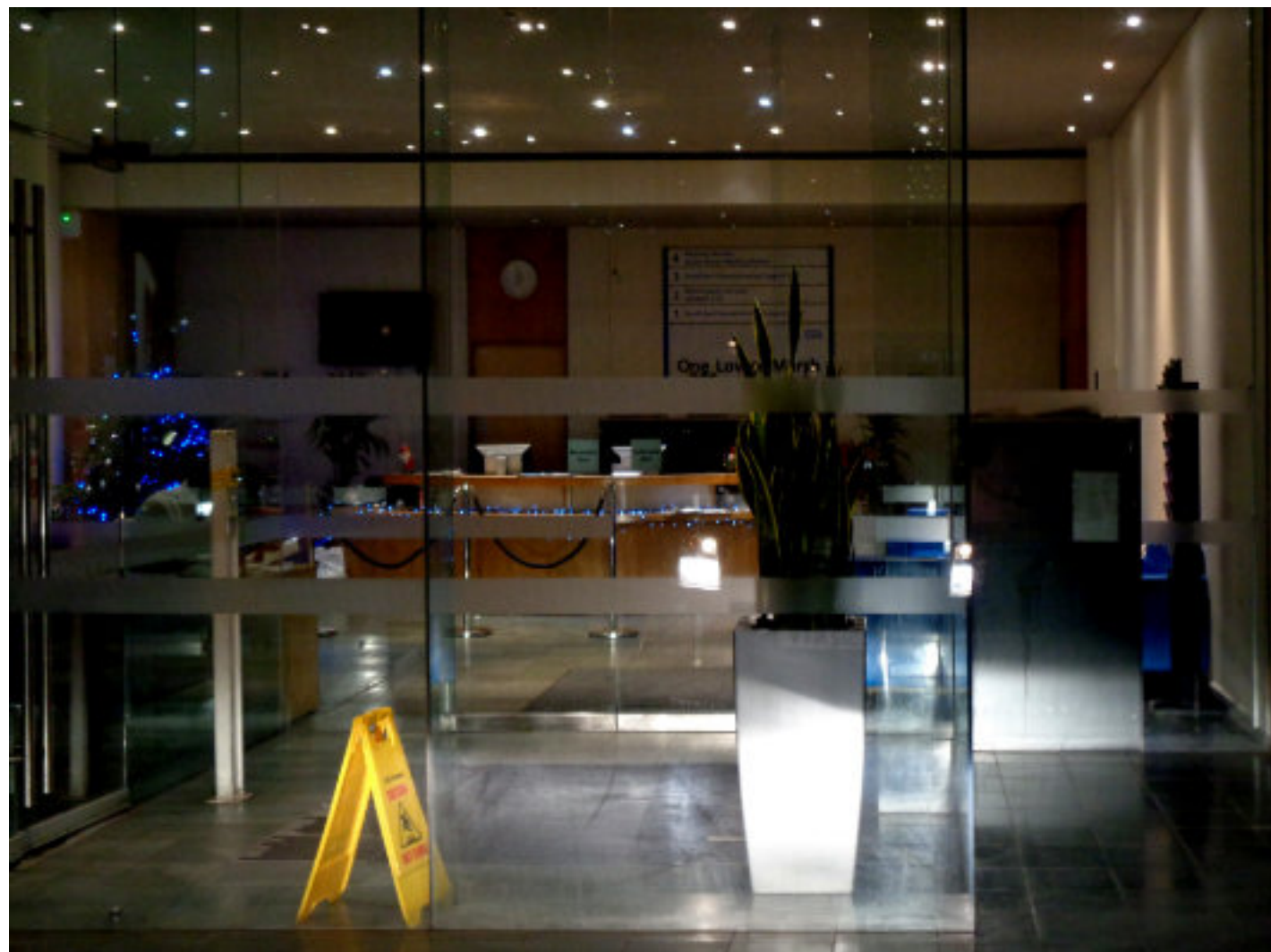




Tree Arch 15 : Borough Market



Purple Foyer : County Hall Hotel



Yellow Tree : Lower Marsh  
Second prize

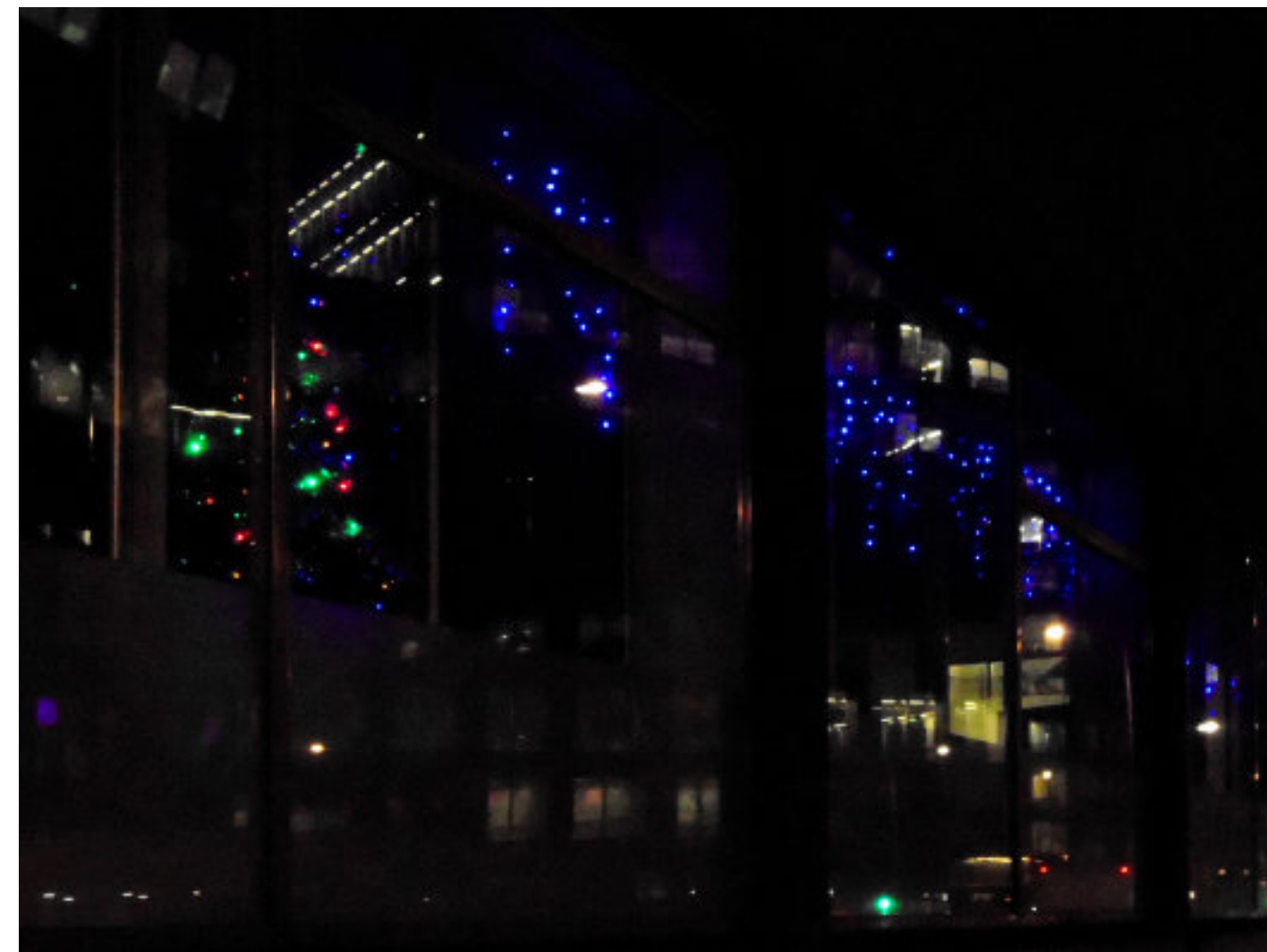


Blue Screen : Southwark Bridge Road





Quodrupole Trees : Great Guildford Street



Blue Lights, Tree and Reflections : Southwark Street



Infinite Dots : Metal Box Factory



LCtree : Union Street





Office Coffee Machines : Great Suffolk Street



Solstice Mushroom : Union Street



Solstice End : Lant Street

# StreetSolstice Prize 2016

Criteria (in no particular order)

- 1) Stupidity per square inch
- 2) Creativity in the face of adversity
- 3) Metaphysical transformation
- 4) Being pretty

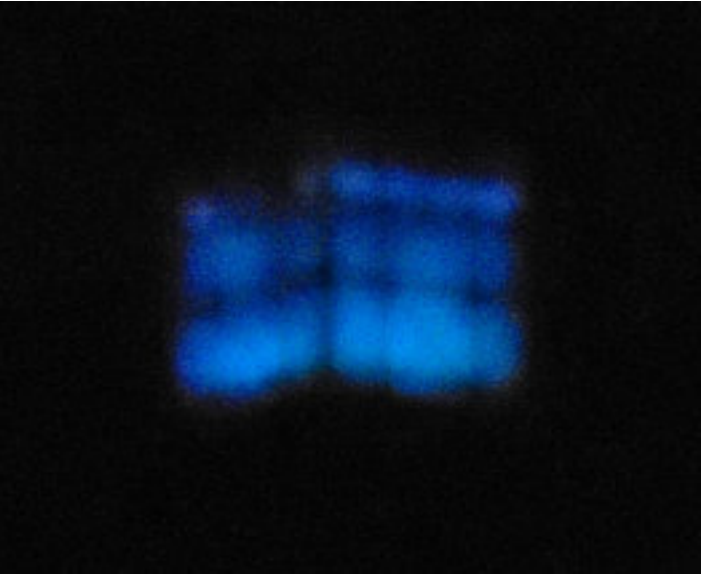
Once again the judges had a difficult time deciding and arguments continued long into the night; and in the process driving our cellar to extinction. The 2016 theme of ‘Foyers’ was loosely interpreted in the interests of fairness, as many of our entrants did not actually have a foyer. Still, as with all our endeavours, it is the taking part that counts. A big ‘thank you’ to all who took part.

So, without further ado here are the results...

3rd Prize : Light Tree, Dark Tree. It is unusual for the judges to award a prize to such a high-end development, but in this instance the Park Plaza Hotel excelled. Still undergoing occupation (2) this foyer presents the visitor with a grand metaphysical dialectic on the themes of light and death (3). At first difficult to spot, the light tree in the foreground hides the looming presence (a larch?) behind. The good looks of the foyer (4) are subtly subverted by this conversation though it is hard to find stupidity (1) in such a dark narrative.

2nd Prize : Yellow Tree. Despite the author’s best attempt to hide away this gem at the back of No.1 Lower Marsh, it could not escape the due diligence of our scouts. Pushing minimalism to its extreme, this foyer at first appears the height of conventionality. Until you realise it is totally transformed by the inclusion of the yellow ‘tree’ in the foreground (3). The judges wrestled with the feasibility of marrying convention with stupidity (1) but in the end had their collective breath taken away by the author’s audacity in introducing this element.

1st Prize : Still Life with Tree. ComputaCenter. Although technically not in occupation, this Foyer admirably fulfilled all the criteria. Apart from the festive colours the ensemble, it achieved a (1) by the totally irrational inclusion of the Union Jack electric guitar. It is indubitably pretty (4) and was undertaken as the creators rushed to get the space ready in time for occupation(2). The judges particularly appreciated the transformation (3) of the blue electrical wiring into festive wreaths. Well done!



# StreetSolstice 2016

Photographs taken on my milk round (04) in the London districts of Bankside and the South Bank during the winter solstice holidays of 2016.

All photographs, layout and texts by Paul Malone

[www.plasmazine.co.uk/streetsurfaces](http://www.plasmazine.co.uk/streetsurfaces)

[www.paulmalone.co.uk](http://www.paulmalone.co.uk)

©Paul Malone 2017





Plasmazine Publishing 2021

[www.plasmazine.co.uk](http://www.plasmazine.co.uk)