



# RAINY SOLSTICE 2012

an observation by Paul Malone



My milk van : Turning right into Marshalsea Road

The archaeologist of the street never takes a holiday.

Although the city may be deserted over the Festive Season, it is risky to assume that the sub-terrene inhabitants of urban mythologies are any less active. On the contrary, their signs and symbols pop up in the most unlikely places. Perhaps more subtly, they subvert the attempts by the overt population to engage in their traditional decorative enterprises.

None of this was planned. And no doubt hundreds of hours of CCTV footage will be poured over in anticipation. In the interim one can only stand in wonder at the audacity of it all.

This series of photographs was taken around the Bankside and South Bank areas of London over two rainy days during the Christmas Holidays 2012. The images were photographed mostly from the artist's Ford Transit (see left) while engaged in the delivery of milk. As a consequence they are taken mainly in the dark, handheld and occasionally through a matrix of rain drops on glass.

Note that at this time I was also delivering to Greenwich Peninsula on my way in to the South Bank.

# RAINY SOLSTICE 2012

an observation by Paul Malone



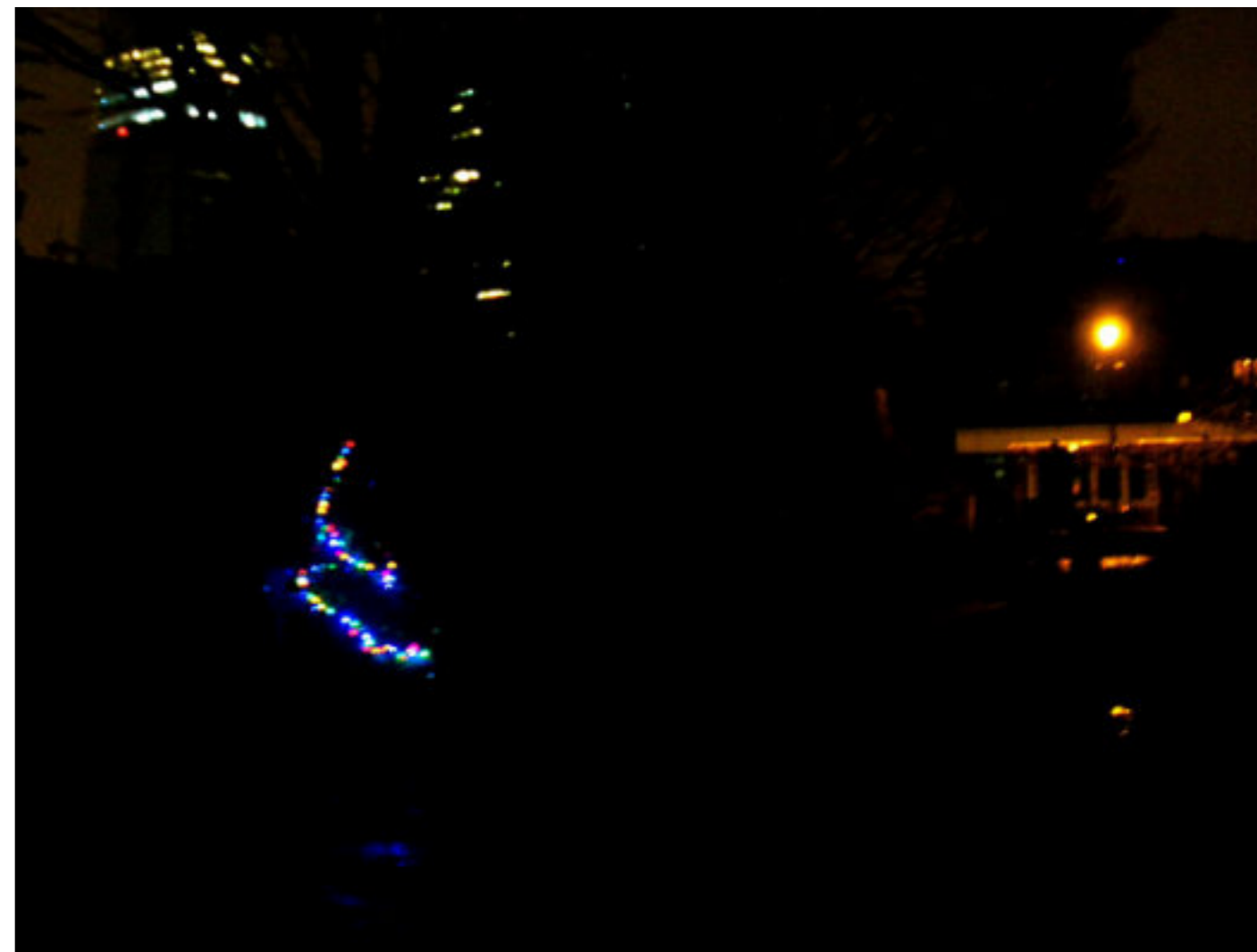
NatWest Tower form Borough High Street



The Urban Forest : Marshalsea Road



The Shard from Ayres Street



Redcross Gardens from Redcross Cottages

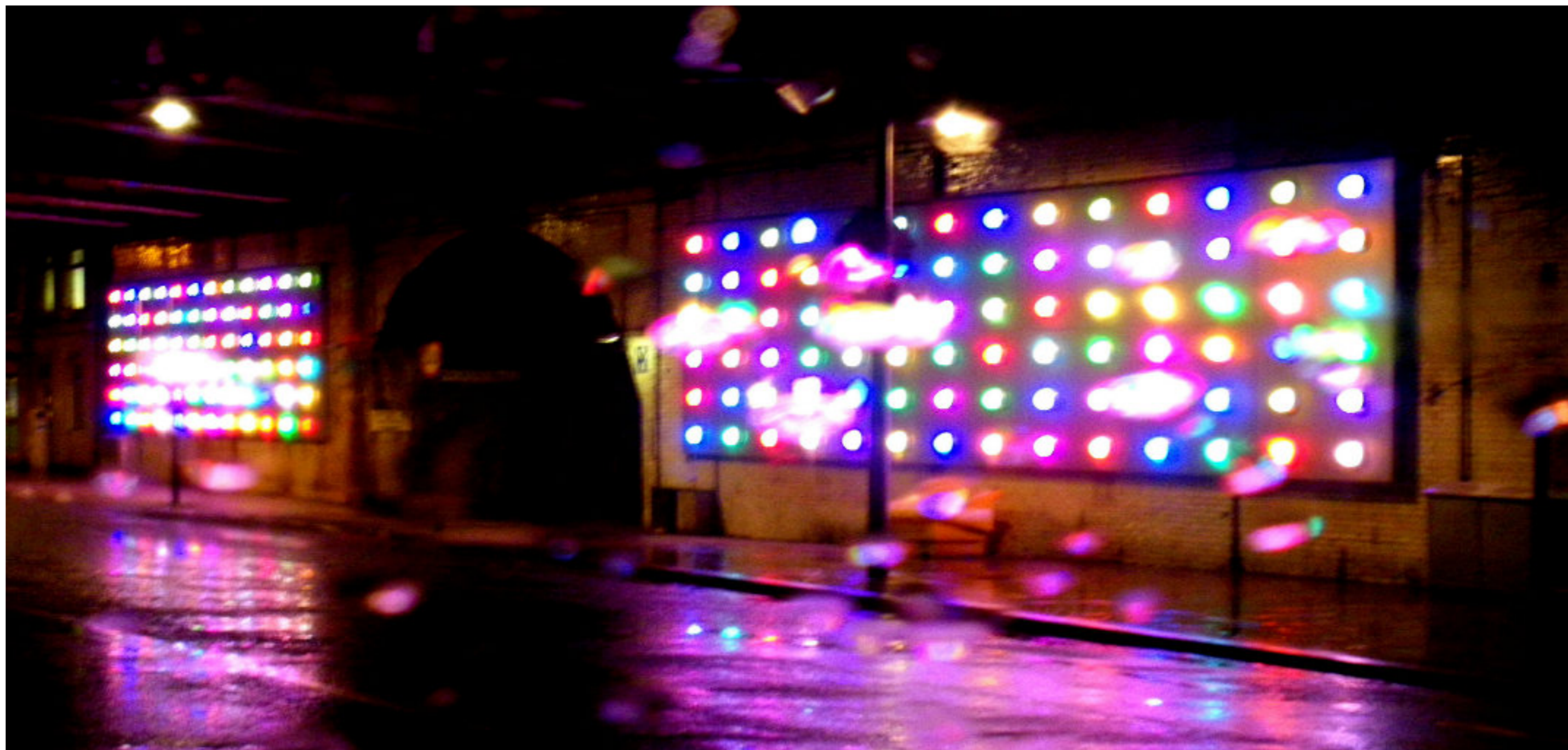


Filling Station from Ayres Street



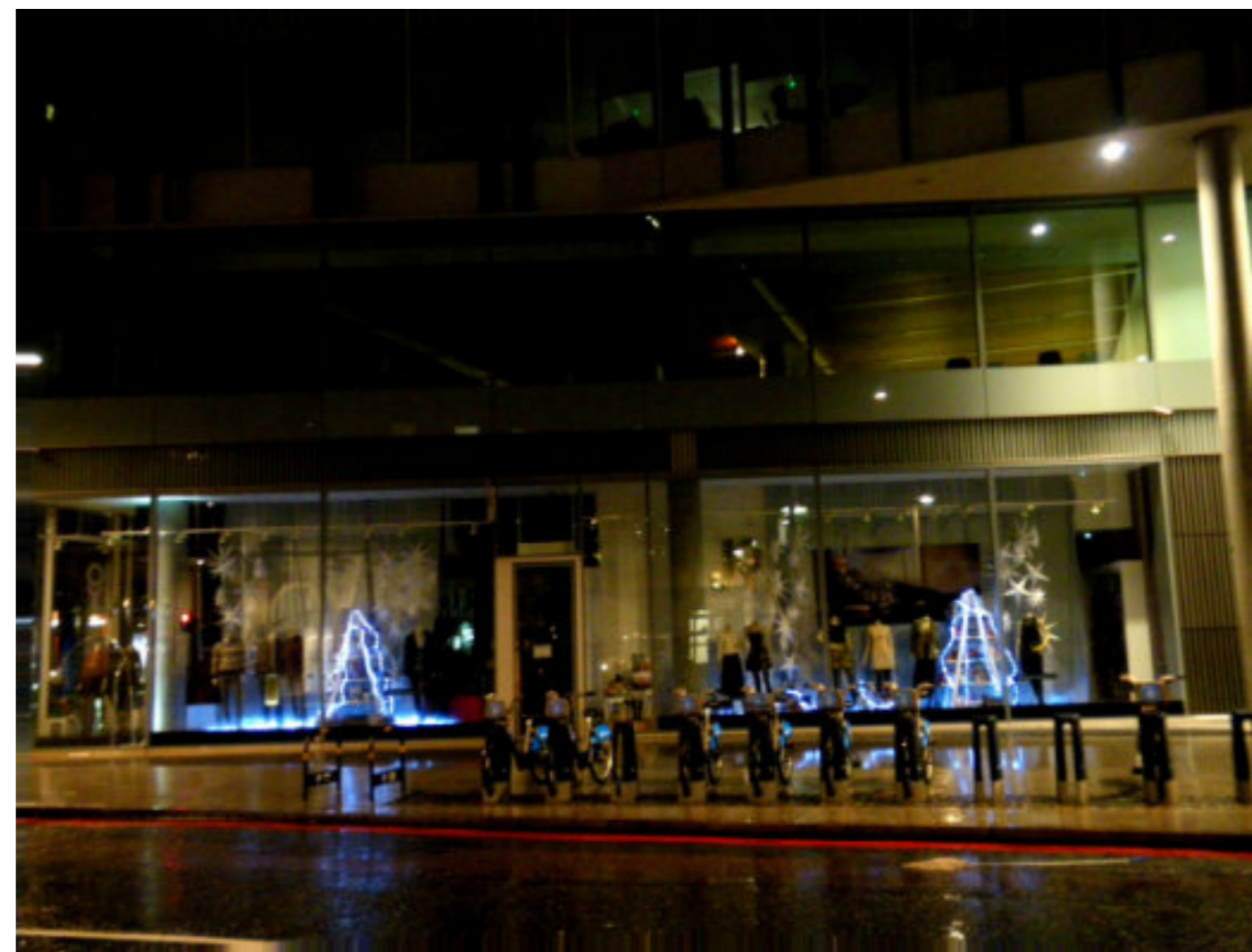
Tool Hire Shop : Southwark Street

Light Sculpture (Smarties) : Southwark Street





Festive Scene. Allies and Morrison : Southwark Street



Joy : Southwark Street



Ink : Chancel Street. *(First Prize)*

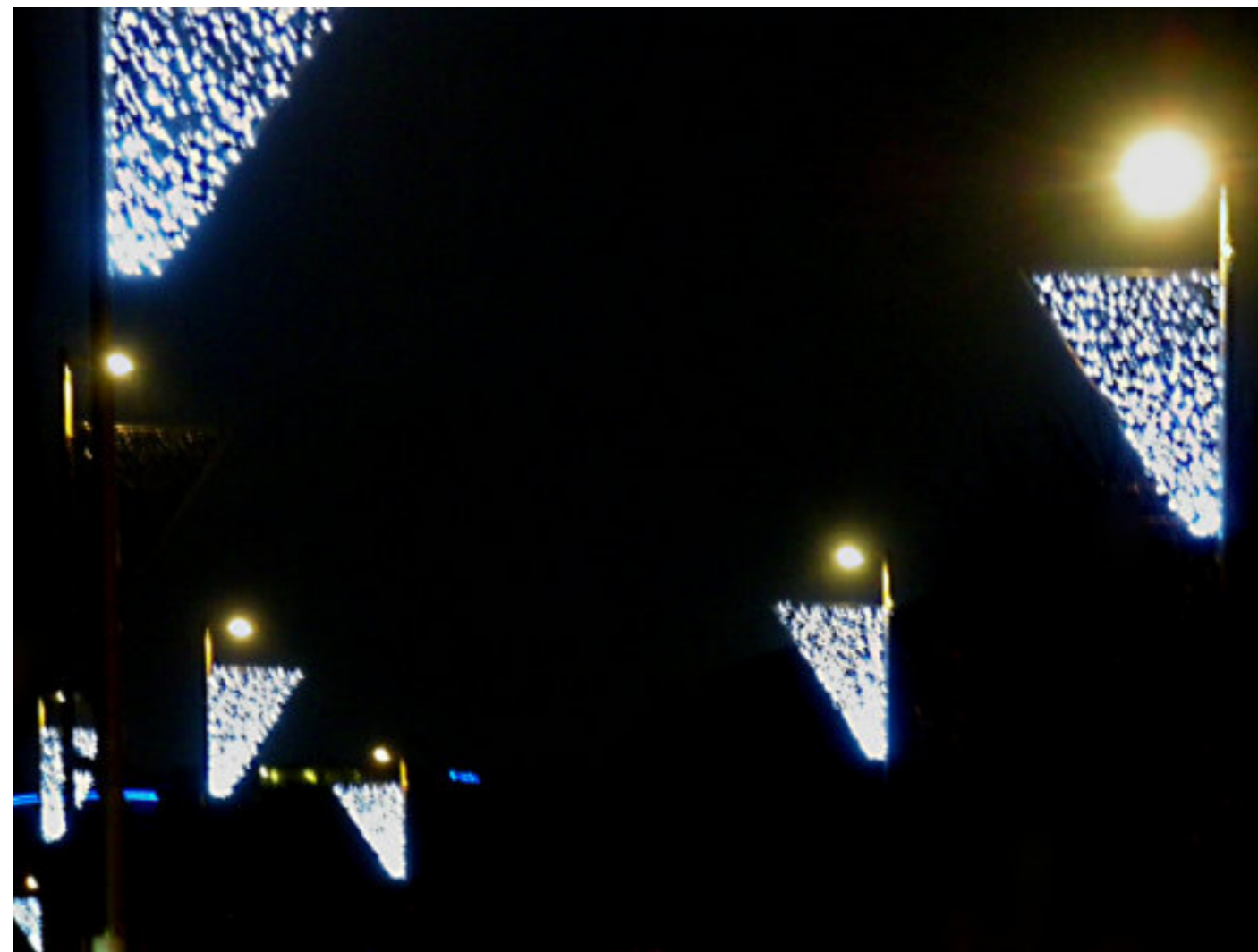


Tate Modern cranes : Hopton Street *(Second Prize)*





Almshouses : Hopton Street



The Cut : Waterloo



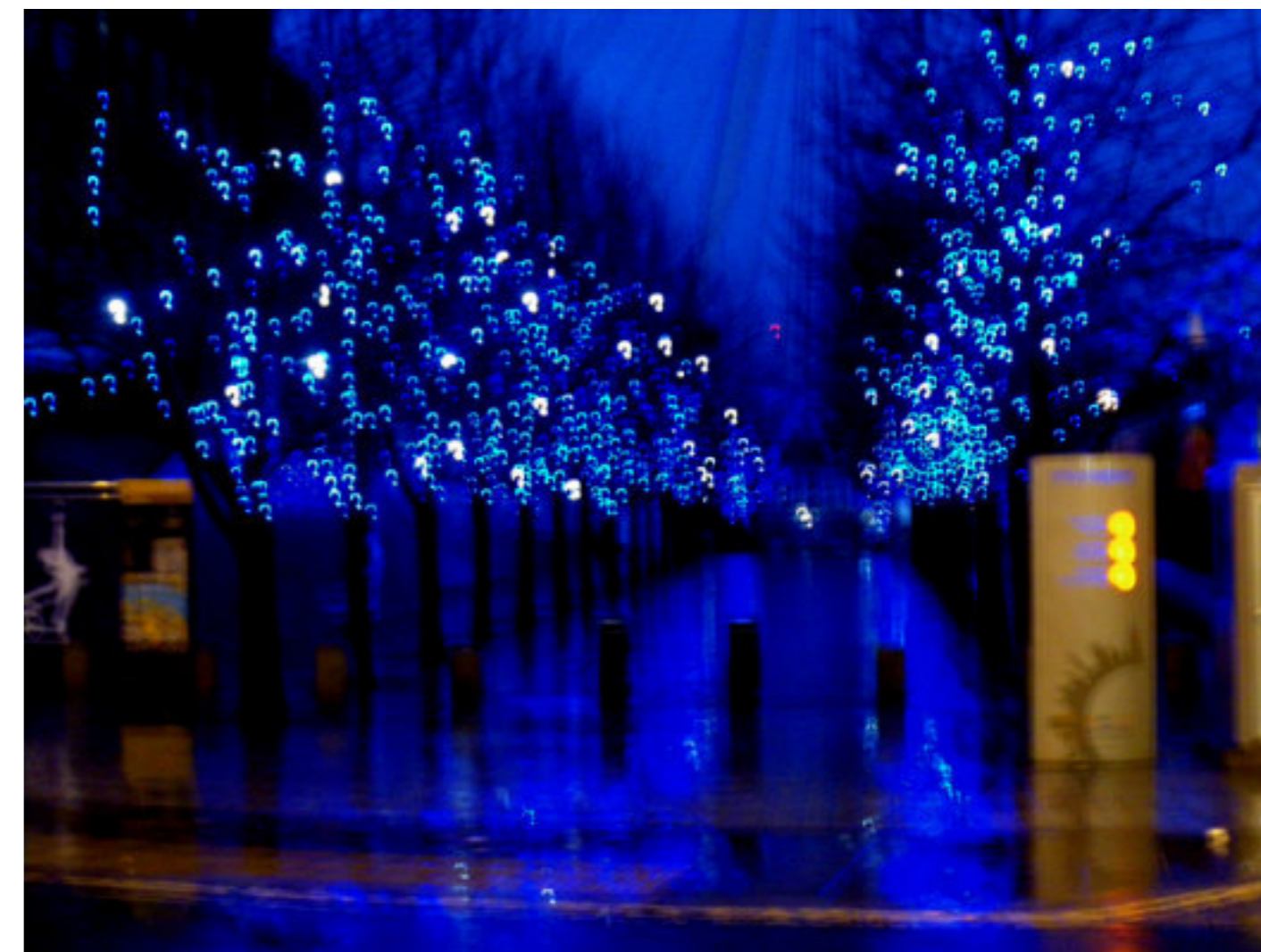
Manhattan Lofts : Hopton Street



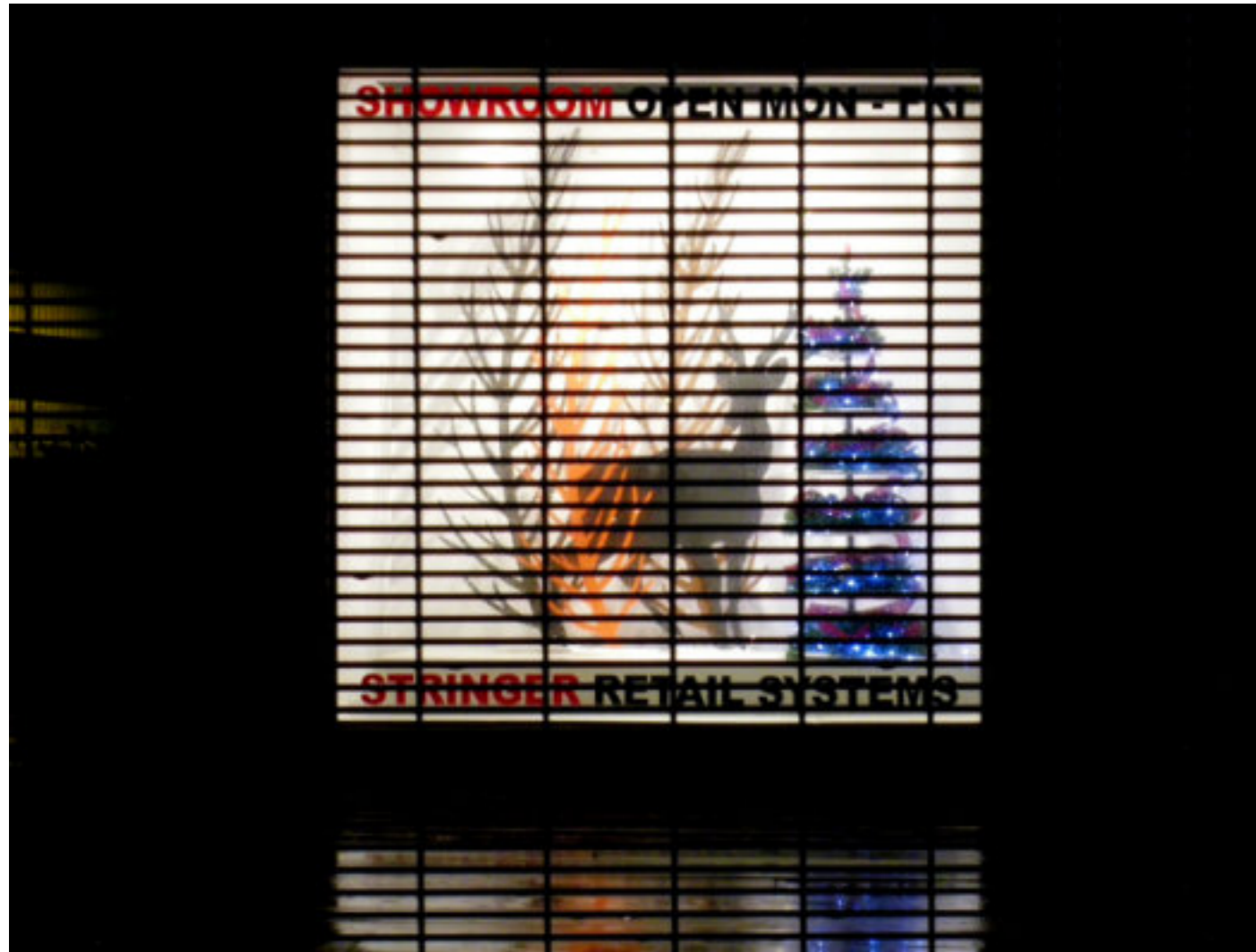
Electric Car Port : Upper Ground



Cycle Shop : Hatfields



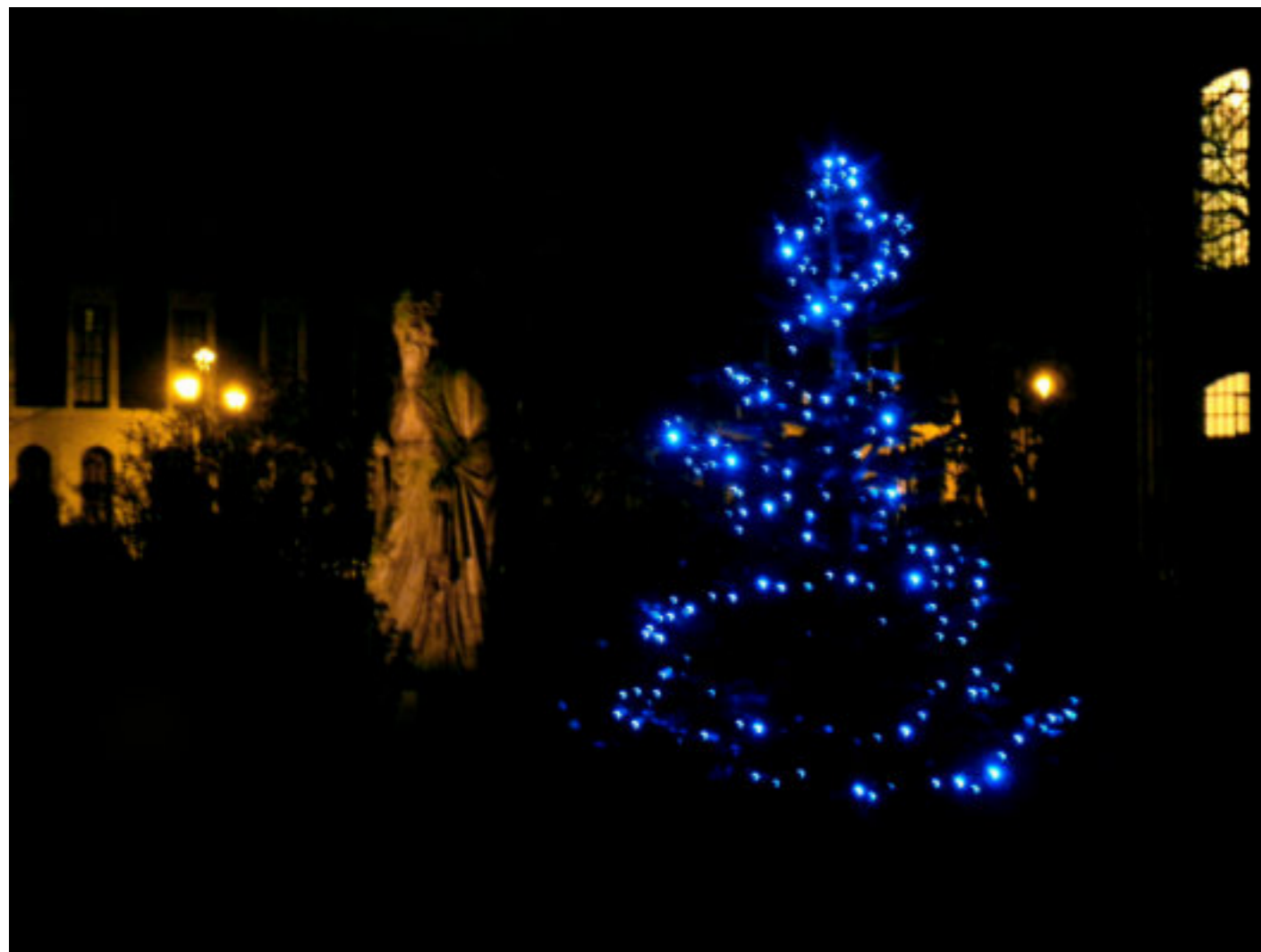
London Eye Approach : Belvedere Road



Stringers : Tunnel Avenue



Canary Wharf : Edmund Halley Way



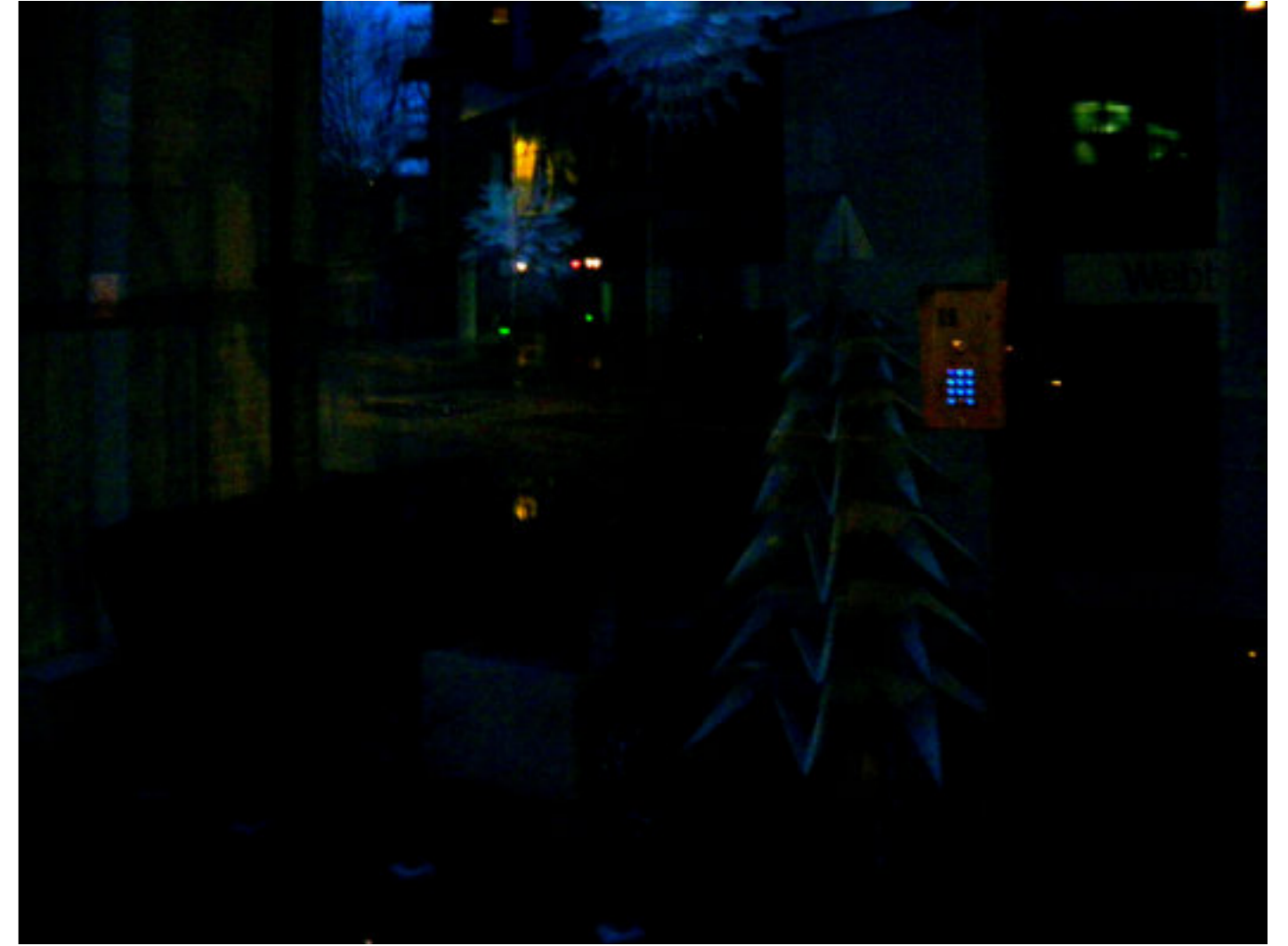
Trinity Church Square



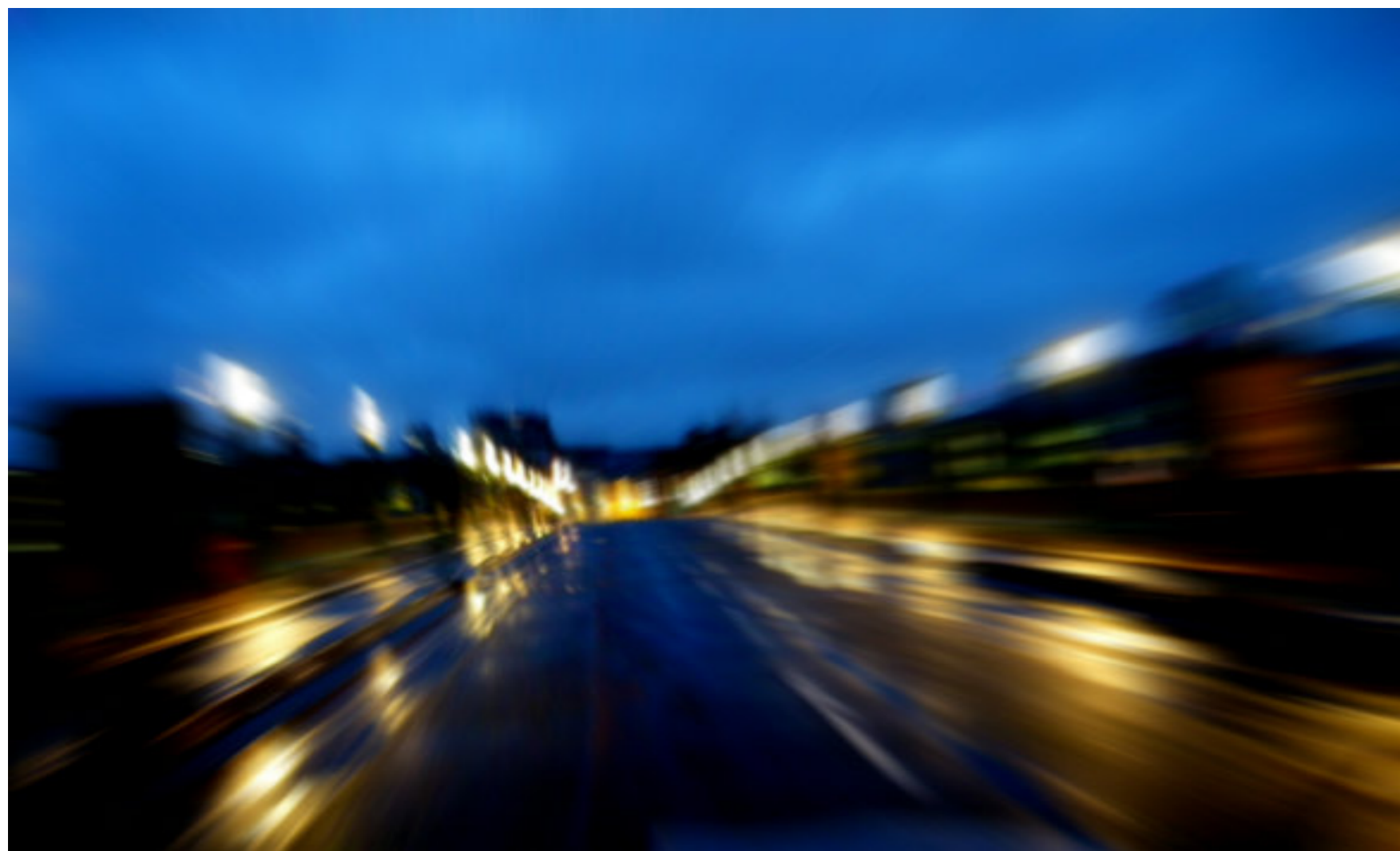
The Shard : Redcross Gardens



Loading Bay, Blue Fin Building : Zoar Street. *(Third Prize)*



Webb deVlam : Great Suffolk Street



Driving Back at Dawn : London Bridge

## Rainy Solstice Prize 2012

Criteria (in no particular order)

- 1) Stupidity per square inch
- 2) Creativity in the face of adversity
- 3) Metaphysical transformation
- 4) Being pretty

This being the first of this StreetSolstice compilation it took a while to figure out the criteria. Once established however it has stood in good stead for several years following.

So, without further ado here are the results...

3rd Prize : Loading Bay : Blue Fin Building. For several years staff at this loading bay put on a fantastic light show; sometimes it was like coming in to land at Heathrow airport. Unfortunately 'health and safety' intervened and their efforts were banned. This represents a modest comeback so definitely a (2).

2nd Prize : Tate Modern cranes : Hopton Street. A great imitation of the demon in Nigel Kneale's 'Quatermass and the Pits' wins this second prize for its metaphysical content (3). Also, as it was to remove the damaged 'hat' on the chimney after a storm it merits (2).

1st Prize : Ink : Chancel Street. As the design offices were undergoing a refurbishment this entry more than fulfils (2). The use of whatever materials were to hand (ducting) is exceptional as is the nice touch (barely visible in this photo) of a coat hanger in lieu of a fairy (4). It does, as is more than evident, fulfil (1) in spades. Well done!



## Rainy Solstice 2012

Photographs taken on my milk round (04) in the London districts of Bankside and the South Bank during the winter solstice holidays 2012

All photographs, layout and texts by Paul Malone

[www.plasmazine.co.uk/streetsurfaces](http://www.plasmazine.co.uk/streetsurfaces)

[www.paulmalone.co.uk](http://www.paulmalone.co.uk)

©Paul Malone 2013



Plasmazine Publishing 2021

[www.plasmazine.co.uk](http://www.plasmazine.co.uk)